




CAREN GILBERT-WEEDMAN

**exp** UK

@ [caren.gilbertweedman@exp.uk.com](mailto:caren.gilbertweedman@exp.uk.com)

 [carengilbertweedman.exp.uk.com](https://carengilbertweedman.exp.uk.com)

 07970 080 010



## Apartment 11, Backford Hall, Blencowe Close, Chester

£450,000

🛏 2 🚿 2 🛋 1

- FIRST FLOOR TWO BEDROOM APARTMENT IN GRADE II LISTED BUILDING
- SEPARATE FITTED KITCHEN WITH INTEGRATED HIGH QUALITY APPLIANCES
- BATHROOM AND EN SUITE SHOWER ROOM
- SERENE PARKLAND SETTING WITH LANDSCAPED COMMUNAL GARDENS
- FUSION OF MODERN INTERIOR and PERIOD ARCHITECTURAL DETAILS
- SPACIOUS LIVING / DINING AREA
- THREE ALLOCATED PARKING SPACES
- EXCELLENT TRANSPORT LINKS TO CHESTER, A41 and M56/M53
- GARDENS VIEWED TO BE APPRECIATED



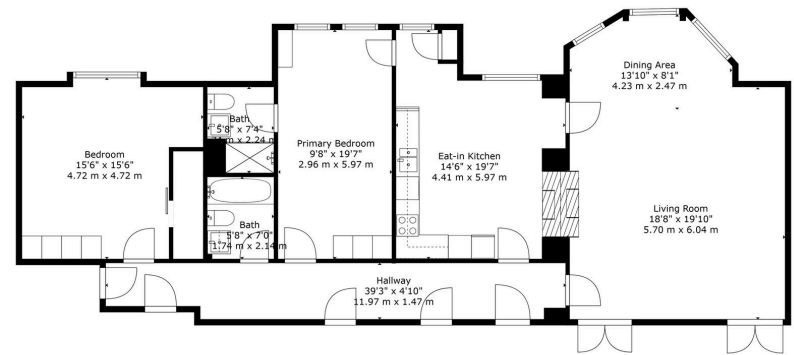
### QUOTE FOR VIEWING - REF - CG0525

Discover a stunning first-floor, two bedroom apartment in the charming village of Backford, just 4.5 miles from Chester. This modern property, part of a Grade II listed building, features high ceilings, beautiful views, and a separate high-quality fitted kitchen with integrated appliances. The spacious living/dining area and two generous bedrooms, including a master with an en-suite, ensure comfort and style. Enjoy the convenience of three allocated parking spaces and the serene parkland setting with excellent transport links.

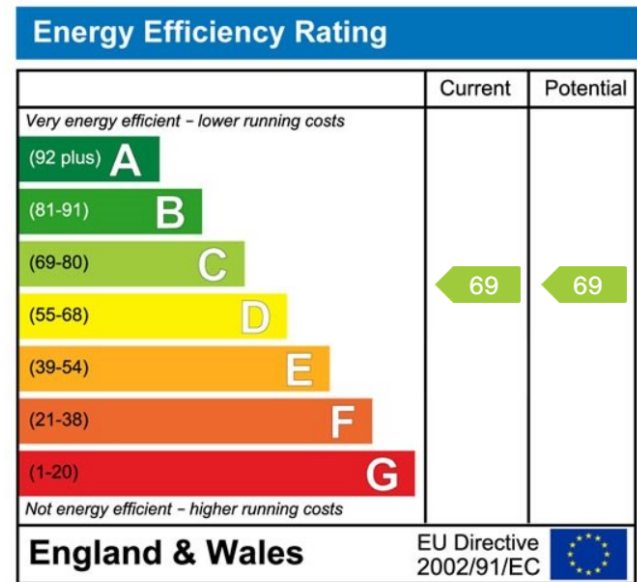








TOTAL: 1403 sq. ft. 130 m<sup>2</sup>  
 FLOOR 1: 1403 sq. ft. 130 m<sup>2</sup>  
 Floor Plan Created by Cuckoo App. Measurements Deemed Highly Reliable But Not Guaranteed.



eXp World UK Ltd is a registered company at Corporation Service Company (UK) Limited, 5 Churchill Place, 10th Floor, London, United Kingdom, E14 5HU. Registered company number is 12016573. VAT Registration Number is 327 4120 29