



GLEN HEATON

exp<sup>®</sup> UK

@glen.heaton@exp.uk.com

glenheaton.exp.uk.com

01617 062054



# 55 Birchfield Road, Cheadle Heath

Offers Over £270,000

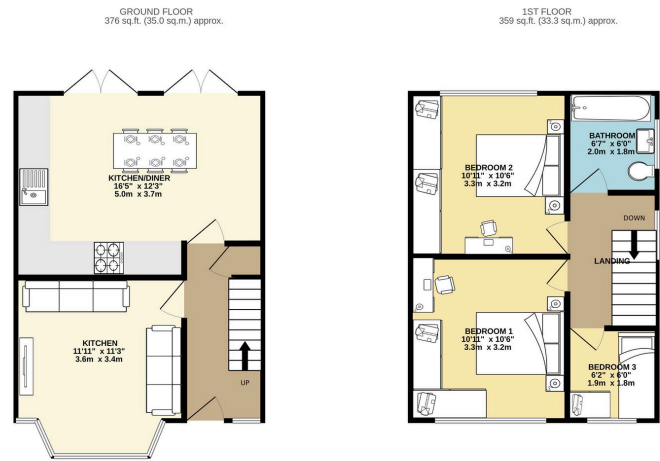
3 1 1





- Please Quote Ref GH702
- Off Road Parking
- Stunning Open Plan Kitchen Dining Area
- Large Rear Garden
- Walking Distance To outstanding Local Schools
- Excellent Transport Links





Open Day Saturday 17th May, Call To Book Your Time Slot.

Welcome To Birchfield Road, Cheadle Heath, A Superb Three Bedroom Semi Detached Home.

