

Springwater Drive, Weston, Crewe, CW2 5FW

£750,000

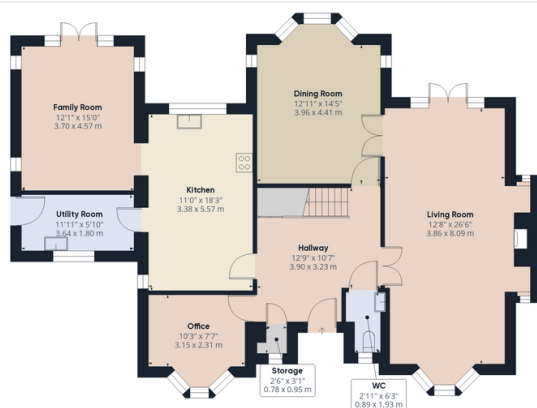
🛏 5 🚿 3 🛋 4



Springwater Drive, Wychwood Park

A Prestigious Five-Bedroom Residence in a Gated Executive Development

- Prestigious gated development with 24/7 manned security
- Four separate reception rooms offering versatile living
- Three bathrooms, including two en suites
- Large wraparound gardens with three patio seating zones
- Close to top schools, the M6, Crewe Station, and Manchester Airport
- Five generously proportioned double bedrooms
- Hand painted breakfast kitchen with integrated appliances
- South-facing balcony overlooking parkland
- Detached double garage and driveway parking for four vehicles
- Located near the 17th tee of the Wychwood Park Championship Golf Course



Floor 0 Building 1



Floor 1 Building 1

Approximate total area[®]2282.2 ft²212.02 m²

Balconies and terraces

43.27 ft²4.02 m²

(1) Excluding balconies and terraces

While every attempt has been made to ensure accuracy, all measurements are approximate, not to scale. This floor plan is for illustrative purposes only. Calculations are based on RICS IPMS 3C standard.

GIRAFFE360