



CAREN GILBERT-WEEDMAN

exp[®] UK

@ carengilbertweedman@exp.uk.com

🌐 carengilbertweedman.exp.uk.com

☎ 07970 080 010

The Glen, Blacon, Chester, Cheshire, CH1 5GA

£199,500

🛏 2 🚿 1 🚗 1

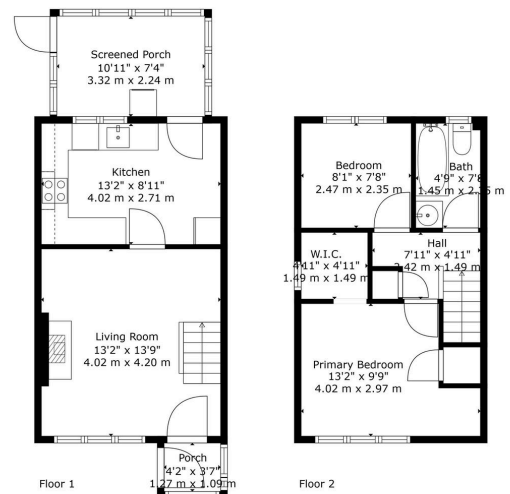
- QUOTE FOR VIEWING - REF - CG0525
- PORCH, LOUNGE, KITCHEN AND SUNROOM
- GARDEN TO THE REAR
- NEAR THE CYCLE PATH
- IDEAL FOR FIRST TIME BUYER
- TWO BEDROOM SEMI DETACHED HOUSE
- TWO DOUBLE BEDROOMS AND BATHROOM UPSTAIRS
- GARAGE AND DRIVEWAY FOR TWO VEHICLES
- CLOSE TO CHESTER CITY CENTRE
- COUNCIL TAX B / EPC D / TENURE - FREEHOLD



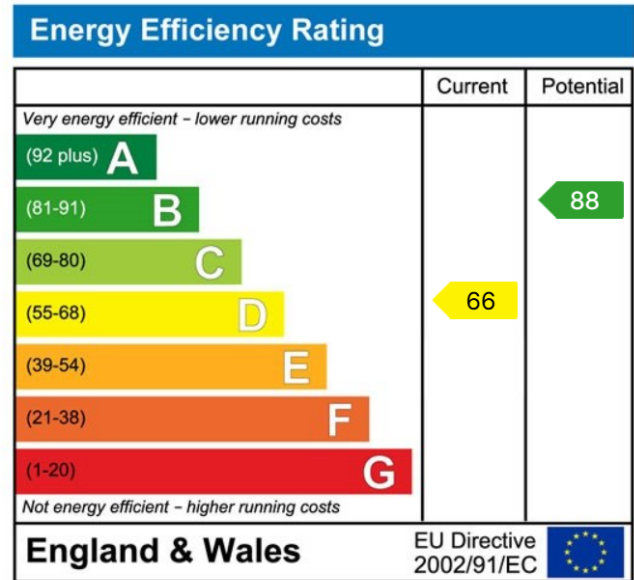
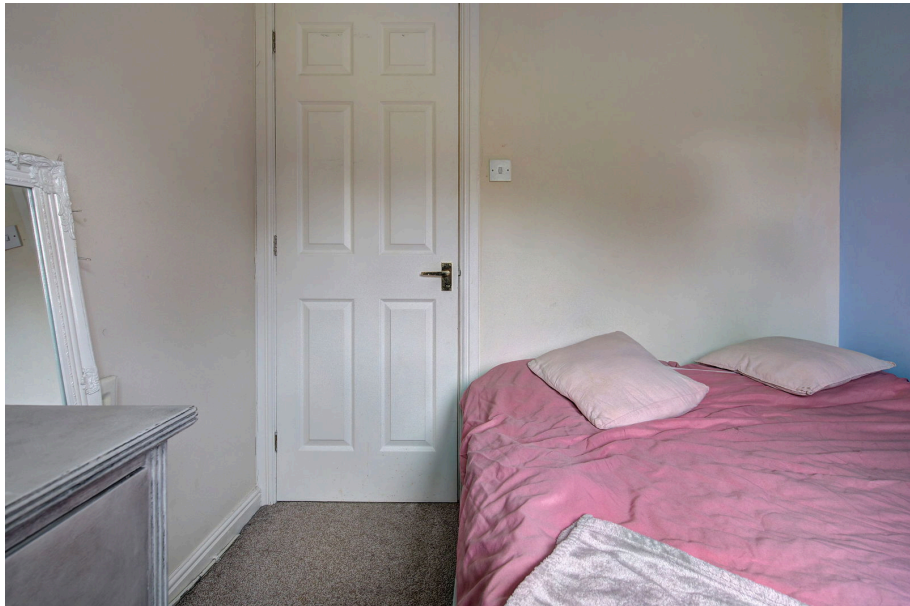
QUOTE FOR VIEWING - REF - CG0525

This charming two-bedroom semi-detached house is nestled on a quiet road with an inviting open aspect. with access to the cycleway into the City of Chester. It features a lounge, kitchen, conservatory/sunroom, gas central heating, a garage, and off-road parking. for 2 vehicles. The property is an appealing choice for those seeking comfort and convenience.





TOTAL: 608 sq. ft. 56 m²
 FLOOR 1: 304 sq. ft. 28 m², FLOOR 2: 304 sq. ft. 28 m²
 EXCLUDED AREAS: PORCH: 15 sq. ft. 1 m², SCREENED PORCH: 80 sq. ft. 7 m²
 Floor Plan Created by Cubikasa App. Measurements Deemed Highly Reliable But Not Guaranteed.



eXp World UK Ltd is a registered company at Corporation Service Company (UK) Limited, 5 Churchill Place, 10th Floor, London, United Kingdom, E14 5HU. Registered company number is 12016573. VAT Registration Number is 327 4120 29