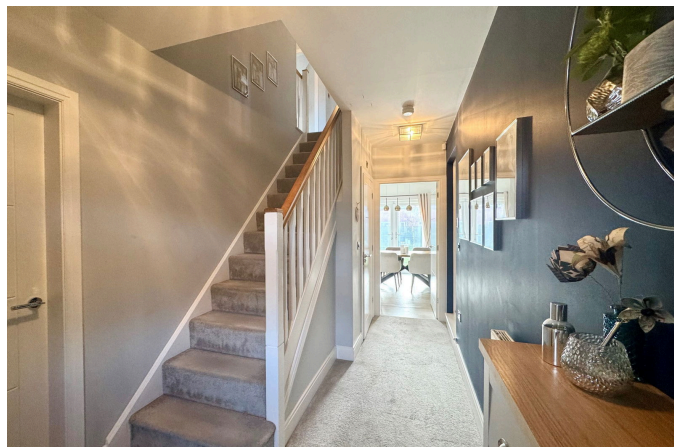


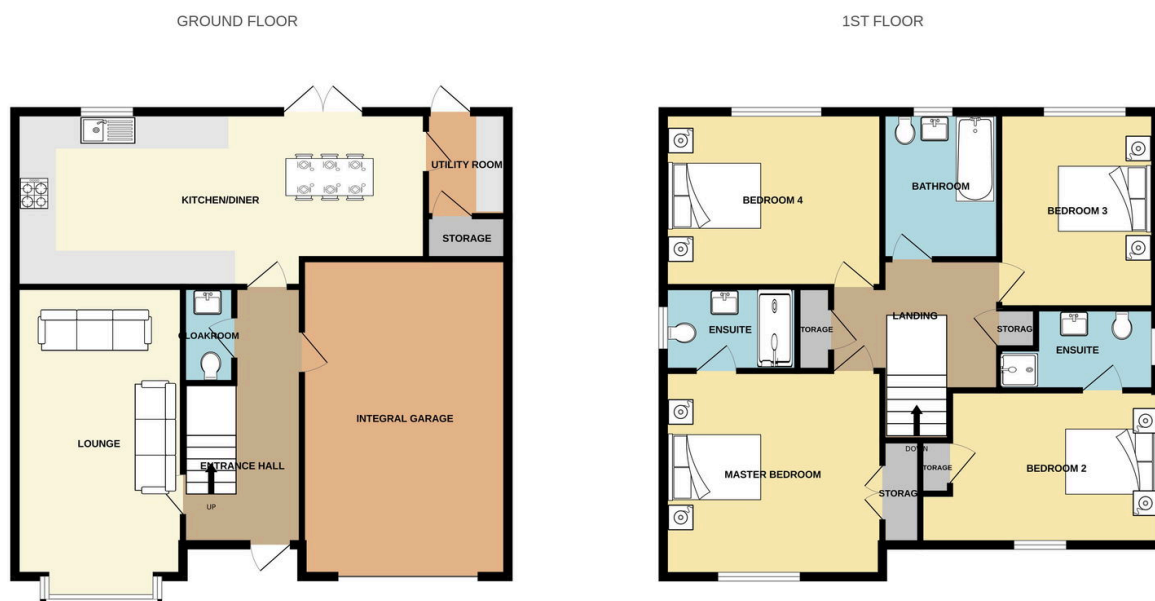
18 Radcliffe Drive, Farington Moss

£360,000

🛏 4 🚿 3 🚗 2



- Detached four bedroom property
- All double bedrooms
- Spacious open plan kitchen/diner
- Two bedrooms with ensuite
- South facing garden
- Close to local schools, shops and amenities
- Beautifully presented
- Integral garage/gym space
- Viewing highly recommended



Whilst every attempt has been made to ensure the accuracy of the floorplan contained here, measurements of doors, windows, rooms and any other items are approximate and no responsibility is taken for any error, omission or mis-statement. This plan is for illustrative purposes only and should be used as such by any prospective purchaser. The services, systems and appliances shown have not been tested and no guarantee as to their operability or efficiency can be given.
Made with Metropix ©2025

Beautifully presented four bedroom detached family home in Farington Moss. Close to local schools and amenities this home will appeal to families looking for all the benefits of a modern home in an already established family community. Finished to an exceptional standard, the first floor comprises of an Entrance Hallway with Cloakroom and internal access to Garage. Leading off to the spacious Lounge then through to a Kitchen/Diner with Utility room and French doors to the stunning large garden. To the first floor are four double bedrooms, two with en-suite, and a Family Bathroom. Externally to the front is driveway parking for two vehicles and to the rear is a

South facing sunny garden with decked entertaining space and lawn. Viewing is highly recommended. The property is Freehold. Please quote JB0397 when calling to arrange a viewing.