




CAREN GILBERT-WEEDMAN

**exp**<sup>®</sup> UK

@ [caren.gilbertweedman@exp.uk.com](mailto:caren.gilbertweedman@exp.uk.com)

 [carengilbertweedman.exp.uk.com](https://carengilbertweedman.exp.uk.com)

 07970 080 010

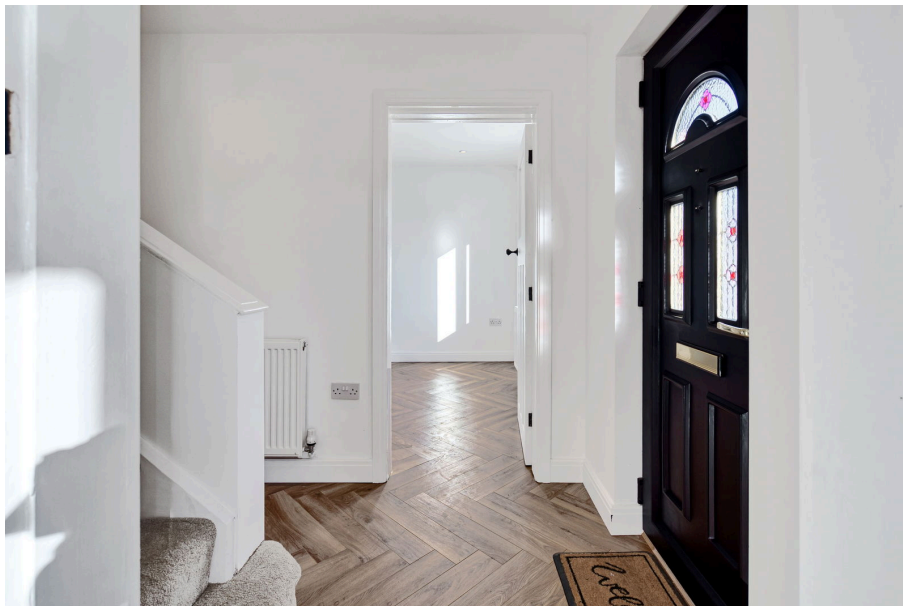


## 17 Warwick Road, Blacon, Chester

£245,000

3 1 1

- QUOTE FOR VIEWING - REF - CG0525
- THREE DOUBLE BEDROOMS
- CONTEMPORARY FINISH WITH PERIOD FEATURES
- DRIVEWAY PARKING
- EPC D - COUNCIL TAX A - TENURE - FREEHOLD
- EPC D - COUNCIL TAX A - TENURE - FREEHOLD
- FULLY REFURBISHED THROUGHOUT TO A FANTASTIC STANDARD
- LARGE REAR GARDEN
- MUST BE VIEWED TO BE APPRECIATED
- NO ONWARD CHAIN

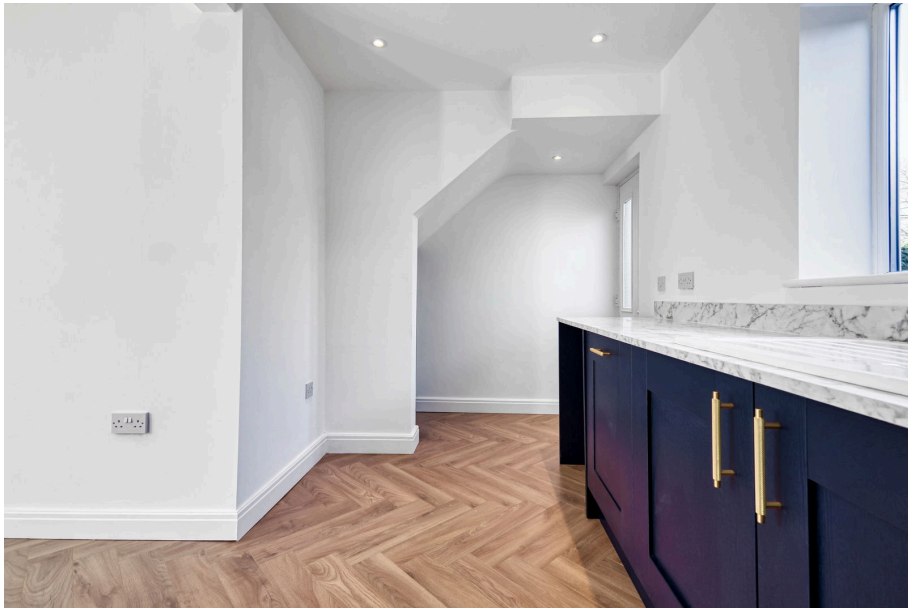


Welcome to this charming 3-bedroom mid-1950s terrace home on Warwick Road, beautifully restored with meticulous attention to period details. The double-fronted design features a gated driveway.

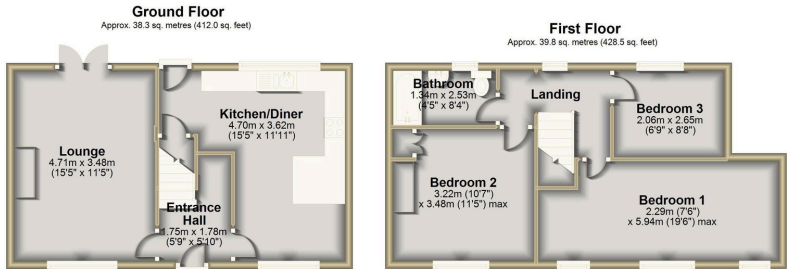
Step into a boot room-style hallway that welcomes you to a fully rewired space with a new central heating system. Enjoy the elegance of herringbone-style manufactured wood flooring and solid wood doors that maintain the property's character.

The spacious kitchen diner is a chef's dream, boasting a brand-new fitted kitchen with integrated appliances and under-counter lighting. The living room features patio doors leading to a mature garden with a large patio and grass area, perfect for entertaining.

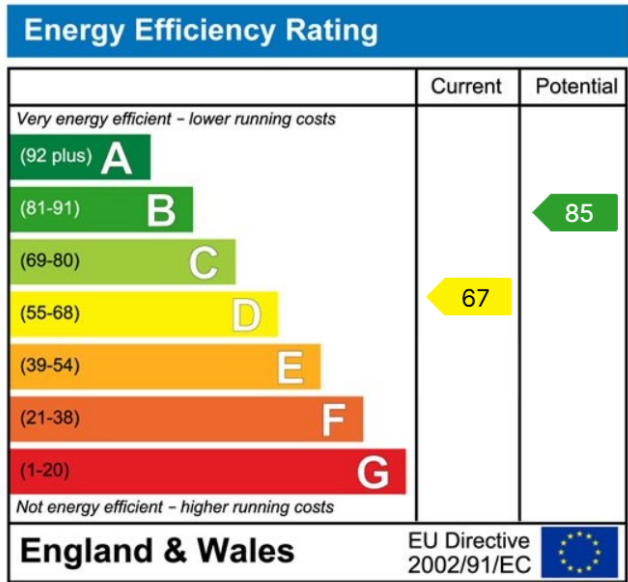
Upstairs, you'll find a luxurious bathroom with marble tiles and a rain-forest shower. The sizable bedrooms offer ample space,







Total area: approx. 78.1 sq. metres (840.5 sq. feet)



eXp World UK Ltd is a registered company at Corporation Service Company (UK) Limited, 5 Churchill Place, 10th Floor, London, United Kingdom, E14 5HU. Registered company number is 12016573. VAT Registration Number is 327 4120 29