



GLEN HEATON

exp<sup>®</sup> UK

@glen.heaton@exp.uk.com

glenheaton.exp.uk.com

01617 062054



# 15 Thornway Drive, Ashton

Offers Over £220,000

3 1 1





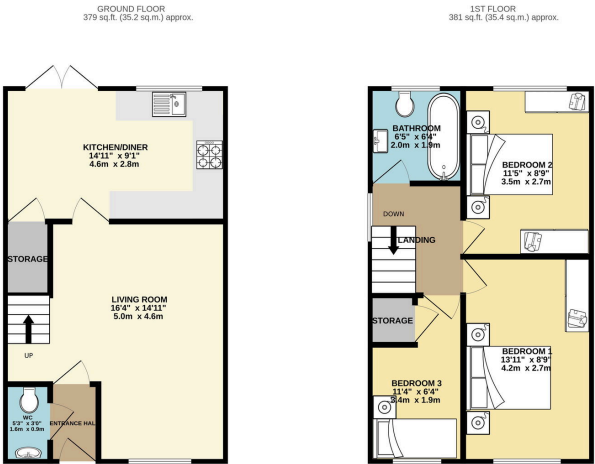
- Please Quote Ref GH702
- Quiet Cul De Sac
- Off Road Parking
- Downstairs W/C
- Large Rear Garden Not Overlooked
- House Still Under Guaranteed
- Walking Distance To Local Schools
- Excellent Transport Links





Open Day Sunday 16th February, Call To Book Your Time Slot.

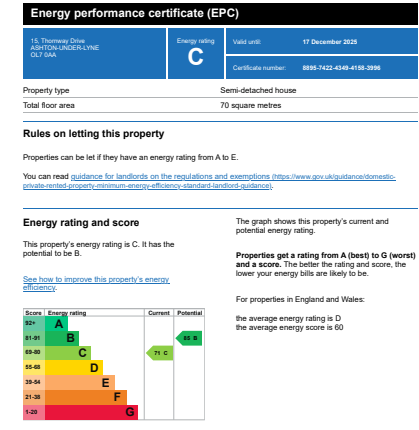
Welcome To Thornway Drive, Ashton. An Immaculate Three Bedroom Semi Detached New Build Home.



TOTAL FLOOR AREA - 761 sq.ft. (70.7 sq.m.) approx.  
While every attempt has been made to ensure the accuracy of the figures contained herein, measurements of plots, sections, rooms and any other items are approximate and no responsibility is taken for any error, omission or misstatement. This plan is for guidance purposes only and should be used in conjunction with the perspective pictures. The contract, terms and conditions shall take precedence and no guarantee is made with reference to this plan.

27/02, 10:34 AM

Energy performance certificate (EPC) - Find an energy certificate - GOV.UK



<https://find-energy-certificate.service.gov.uk/energy-certificates/8855-7422-4348-4158-3595/print/true>

1/4