



Winston Avenue, Bamford

£425,000

Your Logo



# Winston Avenue, Bamford

Situated in a highly sought-after quiet, residential cul-de-sac in Bamford, this impressive four-bedroom detached property combines elegance, comfort, and practicality, making it the ideal home for modern family living. From beautifully landscaped gardens to versatile interior spaces, every aspect of this home has been thoughtfully designed to enhance your lifestyle.

Entrance hallway.

Guest WC.

18ft bay fronted lounge.

Dining Room with doors leading out into the garden.

Fitted master Bedroom with private En-suite

Two further fitted double Bedrooms.

A fourth single fitted Bedroom.

Family Bathroom.

Double Garage: With electric up and over door.







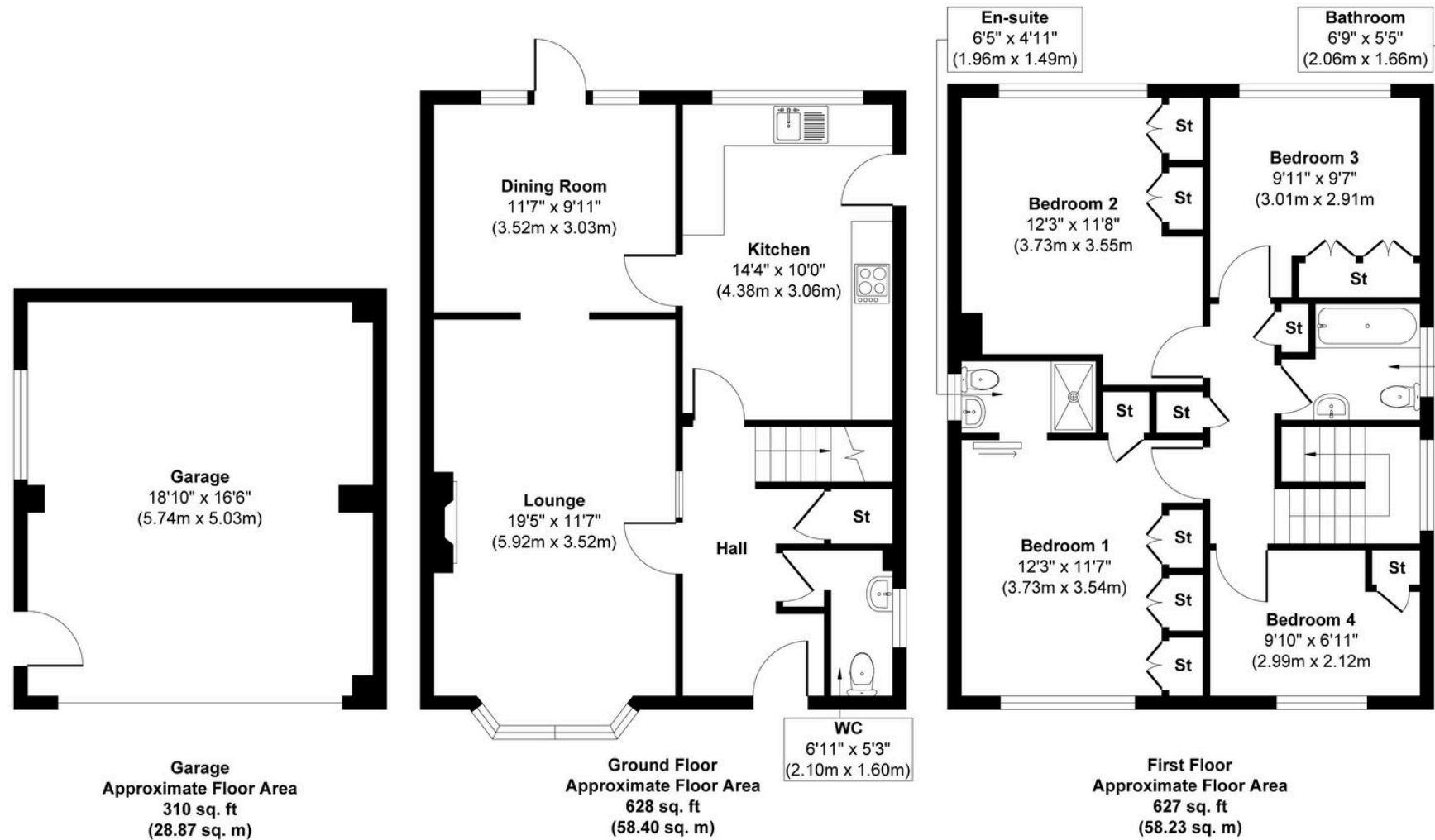








## 4 Winston Avenue, Bamford, OL11 5ja



**Approx. Gross Internal Floor Area 1,865 sq. ft / 145.50 sq. m. (Including Garage)**

Illustration for identification purposes only, measurements are approximate and not to scale, unauthorized reproduction is prohibited.

Produced by [designimperial.com](http://designimperial.com)