



POWERED BY
NIKKI DAVIES exp TM **UK**

@ nikki.davies@exp.uk.com

nikkidavies.exp.uk.com

📞 07770 976 137

Fairview Drive, Marple, Stockport SK6

Offers Over £425,000

3 1 2

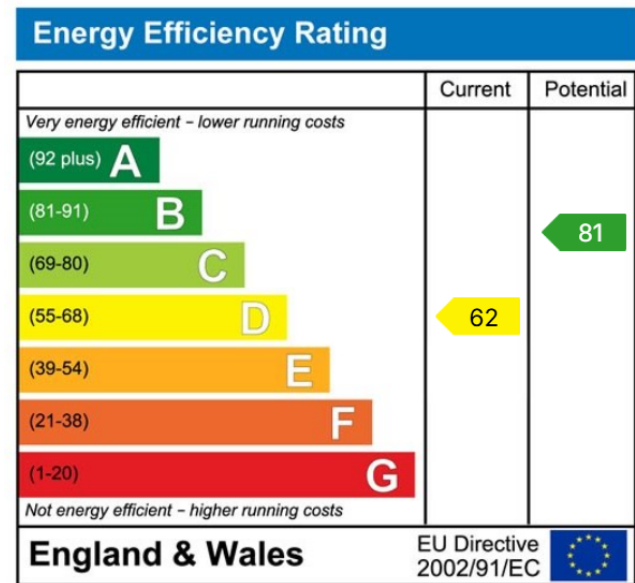
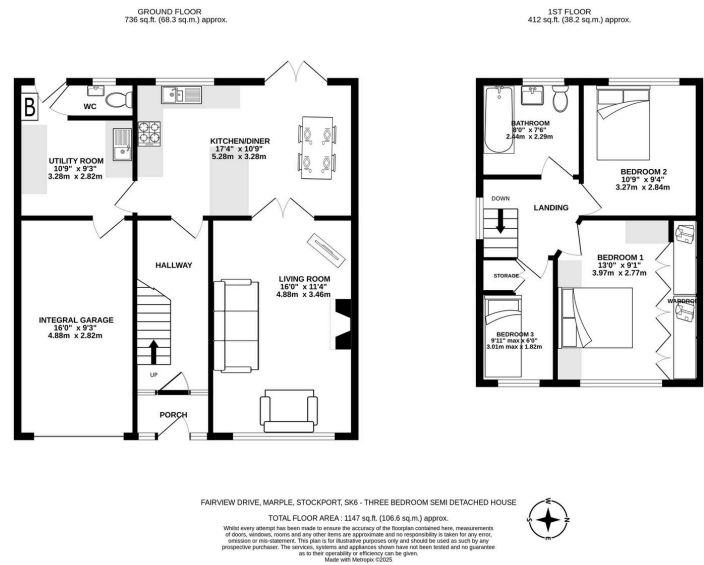
- Well Presented Three Bedroom Semi Detached House
- Open Plan Kitchen Diner With Breakfast Bar
- Catchment For Rose Hill Primary School & Marple Hall School
- Convenient For Marple Town Centre
- Video Tour | To View Contact eXp Quote Ref ND0151
- West Facing Rear Garden Backing Onto Marple Cricket Club
- Driveway Parking | Garage | Storage Shed
- Separate Utility Room | Ground Floor WC
- Freehold | Council Tax Band D | EPC D



Situated on a popular road just a short walk to the local primary school and the centre of Marple, this well presented semi is one of a lucky few to benefit from direct access to the cricket ground with uninterrupted views of the pitch and beyond.

Boasting three bedrooms and an impressive ground floor layout incorporating an open plan kitchen diner, this bright and spacious home is ideal for anyone looking for a family home in a convenient central location.





eXp World UK Ltd is a registered company at Level 37, 25 Canada Square, London, E14 5LQ.

Registered company number is 12016573. VAT Registration Number is 327 4120 29