



GLEN HEATON

exp[®] UK

@glen.heaton@exp.uk.com

glenheaton.exp.uk.com

01617 062054

Birchenlee, Hyde, Tameside, SK14 3EX

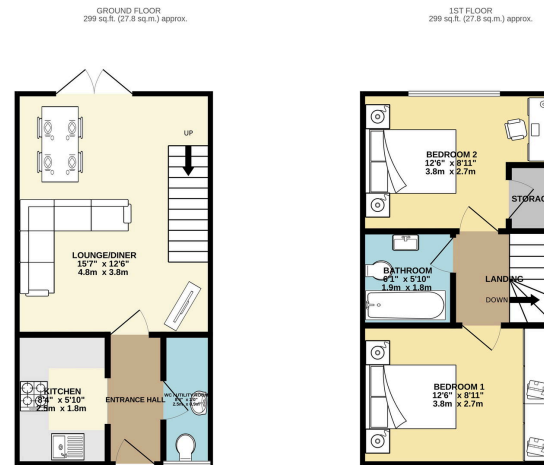
Offers Over £160,000

2 1 1



- Please Quote Ref GH702
- Quiet Cul De Sac
- Two Double Bedrooms
- Downstairs W/C
- Excellent Rental Potential
- Private Allocated Off Road Parking For Several Vehicles





TOTAL FLOOR AREA: 599 sq ft (55.6 sq m) approx.
1999 every effort has been made to ensure the accuracy of the figures contained here. Measurements of areas, volumes, mass and any other items are approximate and no responsibility is taken for any errors, omissions or misstatements. This plan is for informational purposes only and should not be used for any prospective purchase. The services, systems and materials shown here have been listed and no guarantee as to their operation or efficiency can be given. More will be on page 10/24

Open Day Saturday 19th October, Call To Book Your Time Slot.

Welcome To Birchenlee, Hyde, A Two Double Bedroom Mid Terrace Home.

19/10/2024, 18:36 Energy performance certificate (EPC) - Find an energy certificate - GOV.UK

Energy performance certificate (EPC)		
11 Birchenlee HYDE MID-SEX	Energy rating C	Valid until: 18 October 2034 Certificate number: 9219-3943-6208-1614-1209

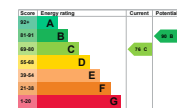
Property type: Mid-terrace house
 Total floor area: 57 square metres

Rules on letting this property

Properties can be let if they have an energy rating from A to E.
 You can read [guidance for landlords on the regulations and exemptions](https://www.gov.uk/guidance/minimum-energy-efficiency-standards-landlord-guidance)
<https://www.gov.uk/guidance/minimum-energy-efficiency-standards-landlord-guidance>

Energy rating and score

This property's energy rating is C. It has the potential to be B.
 See how to improve this property's energy efficiency.
 The graph shows this property's current and potential energy rating.
 Properties get a rating from A (best) to G (worst) and a score. The better the rating and score, the lower your energy bills are likely to be.



For properties in England and Wales:
 the average energy rating is D
 the average energy score is 60

https://find-energy-certificates.service.gov.uk/energy-certificates/210-3943-6208-1614-1209/printout

1/4