



GLEN HEATON

exp[®] UK

@glen.heaton@exp.uk.com

glenheaton.exp.uk.com

01617 062054

50 Turnstone Road, Offerton

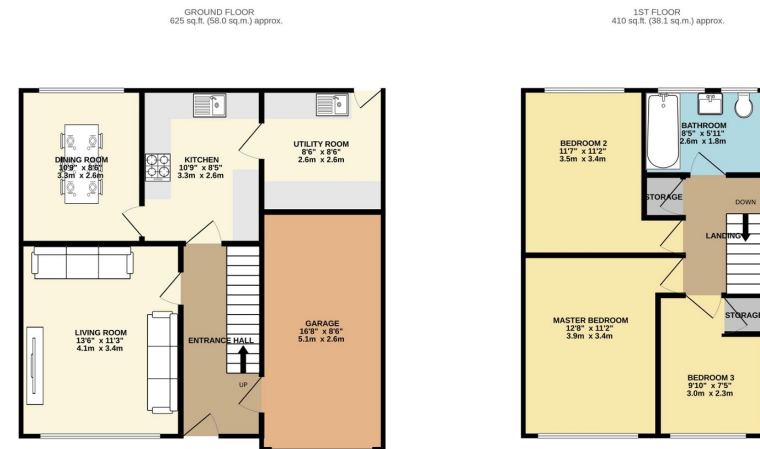
Offers Over £325,000

3 1 1



- Please Quote Ref GH702
- Off Road Parking
- Integral Garage
- Walking Distance To outstanding Local Schools
- Separate Utility Room
- Three Double Bedrooms





TOTAL FLOOR AREA: 1034 sq.ft. (96.1 sq.m.) approx.

While every attempt has been made to ensure the accuracy of the floorplans contained here, measurements of doors, windows, rooms and any other items are approximate and no responsibility is taken for any error, omission or mis-statement. This plan is for illustrative purposes only and should be used as such by any prospective purchaser. The services, systems and appliances shown have not been tested and no guarantee as to their operability or efficiency can be given.

Made with Metrepro 02024

Welcome To Turnstone Road, Offerton.

Open Day Saturday 27th July, Call To Book Your Time Slot.

7/16/24, 10:13 AM Energy performance certificate (EPC) - Find an energy certificate - GOV.UK

Energy performance certificate (EPC)		
51, Turnstone Road STOCKPORT SK12 5SL	Energy rating C	Valid until 1 October 2024
Property type Detached house		Certificate number 8993-4423-9828-7697-8843
Total floor area 84 square metres		

Rules on letting this property

Properties can be let if they have an energy rating from A to E.

You can read [guidance for landlords on the regulations and exemptions](https://www.gov.uk/guidance/landlords-on-the-regulations-and-exemptions).

<https://www.gov.uk/guidance/landlords-on-the-regulations-and-exemptions#energy-efficiency-standards-landlord-guidance>.

Energy rating and score

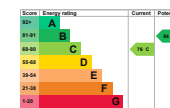
This property's energy rating is C. It has the potential to be B.

[See how to improve this property's energy efficiency.](#)

The graph shows this property's current and potential energy rating.

Properties get a rating from A (best) to G (worst) and a score. The better the rating and score, the lower your energy bills are likely to be.

For properties in England and Wales:
the average energy rating is D
the average energy score is 60



https://find-energy-certificate.service.gov.uk/energy-certificate/8993-4423-9828-7697-8843?print=true

1/5