

30 Mere Brow Lane, Mere Brow

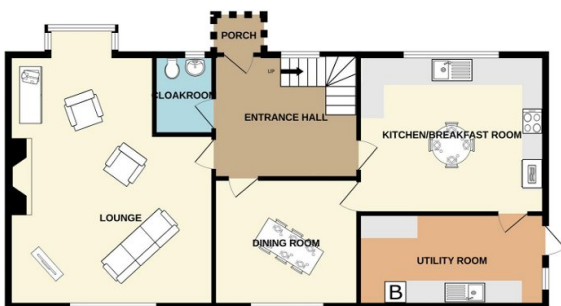
Guide Price £375,000

🛏 3 🚿 2 🚗 2

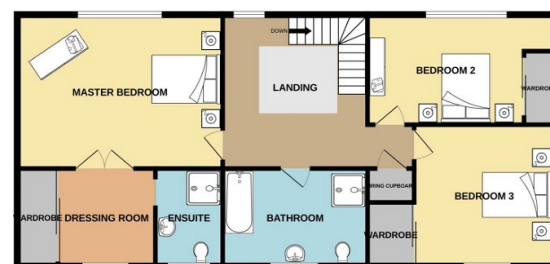


- Charming period property dating back to 1862
- Impressive entrance hall with galleried landing
- Master with Dressing Room and En-suite
- Private parking
- Beautiful established country gardens
- Spacious rooms
- Three Bathrooms
- Field views to front

GROUND FLOOR



1ST FLOOR



Whilst every attempt has been made to ensure the accuracy of the floorplan contained here, measurements of doors, windows, rooms and any other items are approximate and no responsibility is taken for any error, omission or mis-statement. This plan is for illustrative purposes only and should be used as such by any prospective purchaser. The services, systems and appliances shown have not been tested and no guarantee as to their operability or efficiency can be given.
Made with Metropix ©2024

Charming semi-detached period property dating back to 1862 with an abundance of historic appeal situated in the heart of rural Mere Brow. An impressive entrance hall and galleried landing enhances the sense of space and grandeur throughout the home. With field views to the front and boasting three spacious bedrooms, the home features the most beautiful established country garden to the rear. The open-plan kitchen/breakfast room is welcoming and homely, complemented by a practical separate utility room and a convenient downstairs guest bathroom. A large dual aspect lounge with feature fireplace and a dining room are also found on the ground

floor. The master bedroom is a true sanctuary with a separate en-suite and a dressing room, providing ample storage. Ideal for families or those seeking a peaceful retreat, properties like this rarely come to market. therefore, viewing is highly recommended. Property is Freehold. Please quote JB0397 when calling to arrange a viewing