



CAREN GILBERT-WEEDMAN

exp® UK

@ caren.gilbertweedman@exp.uk.com

[carengilbertweedman.exp.uk.com](https://www.carengilbertweedman.exp.uk.com)

📞 07970 080 010

Eskdale Close, Beechwood, Cheshire

£325,000

3 0 0

- THREE BEDROOM DETACHED BUNGALOW
- WELL MAINTAINED BUNGALOW
- KITCHEN / DINING AREA
- THREE GOOD SIZED BEDROOMS
- LOUNGE and SHOWER ROOM and TOILET
- DOUBLE GARAGE with ELECTRIC DOORS
- LANDSCAPED GARDENS TO FRONT AND REAR
- SUMMER HOUSE
- EPC - B / COUNCIL TAX D
- NO ONWARD CHAIN

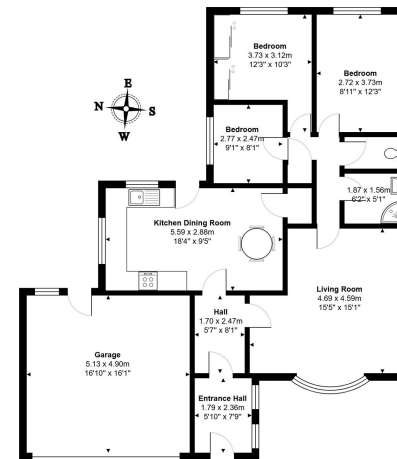


REFERENCE NUMBER REQUIRED TO BOOK VIEWING REF - CG0525

FREEHOLD detached bungalow with an attached double garage located in a popular residential area. The bungalow is extremely well cared for and has had many recent home improvements, including solar panels and loft insulation, new exterior windows and doors, new garage roof and alarm, as well as a bathroom refit. There is a lounge, spacious kitchen diner, three bedrooms and a shower room and separate toilet. The spacious gardens are established and landscaped beautifully. This bungalow is also being sold with NO ONWARD CHAIN. Early viewing is advised.

EPC B / COUNCIL TAX D





All measurements are approximate and for display purposes only

