

Kirkby View, Foxfield, Broughton-in-furness, LA20 6BU

Offers Over £825,000

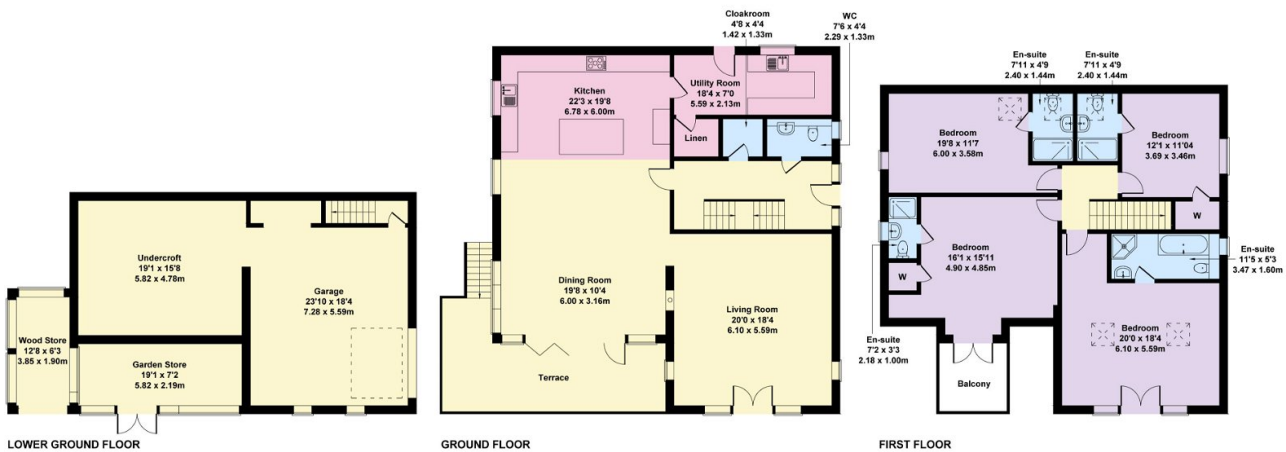
🛏 4 🚗 5 🛋 2



- Luxurious four-bedroom detached house
- Spectacular kitchen featuring two built-in ovens, two built-in hobbs, a fitted microwave, an integrated American fridge freezer and a wine cooler
- Wraparound balcony with heating and lighting, ideal for outdoor dining or relaxation
- Wooden decking and lawn area, perfect for outdoor living
- Low maintenance bond resin drive and path
- Spacious open-plan living spaces, perfect for entertaining
- Dining room with wraparound windows and bifold doors, providing breathtaking views over the estuary
- Four spacious bedrooms, each with its own ensuite bathroom and underfloor heating
- Double garage with electric roller door, Valiant boiler and convenient lighting
- 10-year builder's warranty from LABC



Kirkby View Skelly Crag Foxfield
Approximate Gross Internal Area
3627 sq ft - 337 sq m



Not to Scale. Produced by The Plan Portal 2024
For Illustrative Purposes Only.

KS0077

Kirkby View is an exceptional four-bedroom detached house located in the sought-after area of Foxfield, Broughton-in-Furness. This stunning property offers luxurious and spacious living spaces, including a chef's kitchen, dining room with estuary views, and comfortable living rooms with multi-fuel log burners. The property features four spacious bedrooms, each with its own ensuite bathroom and underfloor heating throughout. Outside, there is ample parking and a wooden decking that stretches the length of the garden. The property also comes with a 10-year builder's warranty from LABC. Don't miss this opportunity to make Kirkby-View your dream home.