



MEGAN RUSSELL

exp<sup>®</sup> UK




@megan.russell@exp.uk.com

🌐 meganrussell@exp.uk.com

📞 07537 923 383

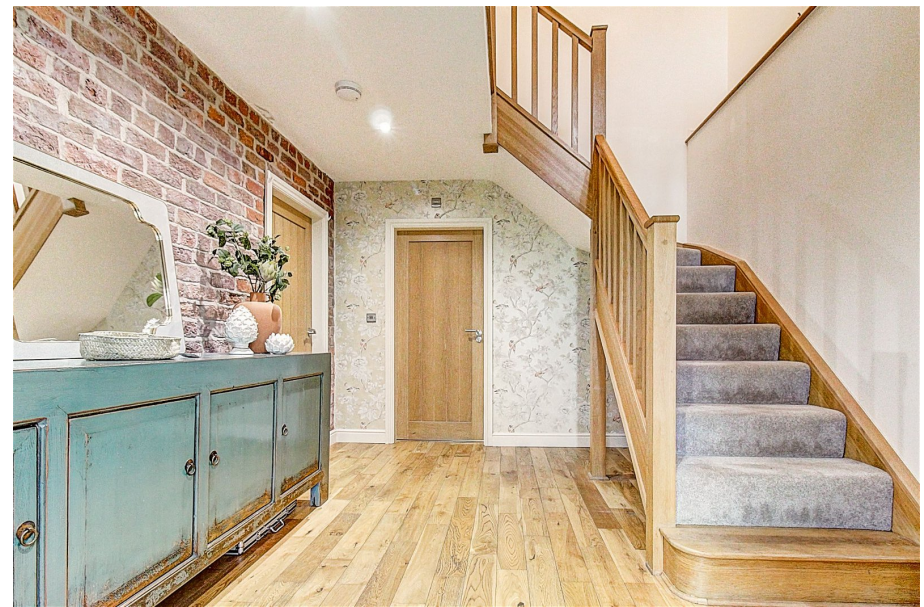
**CHESTER, Cheshire, CH2 4HD**

**Offers In Region Of £750,000**

 4  4  2



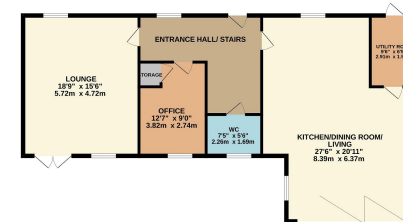
- Double Garage
- Gated Driveway
- Move In Ready!
- Great Transport Links
- Four Double Bedrooms
- Gardens
- Extended Kitchen
- Ideal Location with Easy Access into Town
- Parking
- Three Bathrooms and a WC



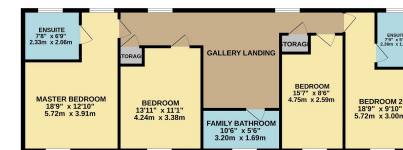


**PERFECT FAMILY HOME.** A character filled barn conversion which has been extended allowing for open plan and spacious living. With a well thought out floor-plan, and great size rooms. The property benefits from plenty of parking, double garage, and gated access, ideal for a growing family.

GROUND FLOOR  
1145 sq.ft. (106.4 sq.m.) approx.



1ST FLOOR  
991 sq.ft. (92.1 sq.m.) approx.



TOTAL FLOOR AREA: 2136 sq.ft. (198.4 sq.m.) approx.  
While every attempt has been made to ensure the accuracy of the floor plan and room measurements, all dimensions are approximate. The actual floor area and room dimensions may vary slightly from the dimensions shown on the floor plan. The floor plan, photos and descriptive text are for information only and do not constitute an offer of any property. Please contact the agent for more information.