

## Beech House, 133 Liverpool Road, Hutton

Offers Over £525,000

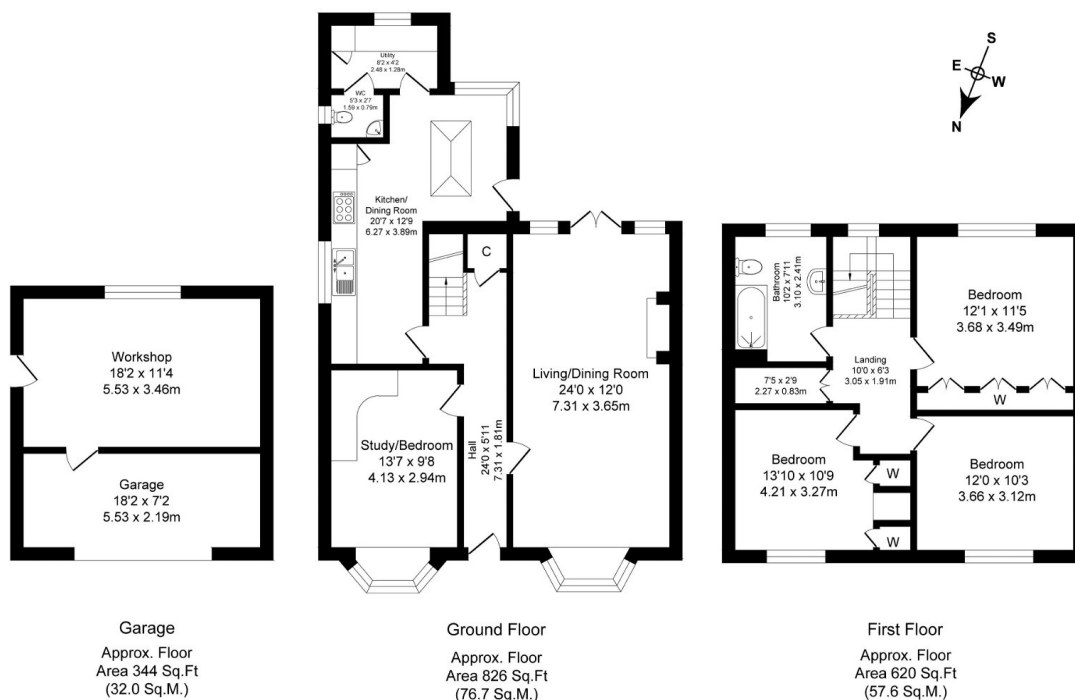
🛏 3 🚿 2 🚗 2



- Charming period property dating to Circa. 1850
- Three/Four bedrooms
- Utility room
- Stunning manicured gardens
- Workshop/Garage with annex potential
- Situated in Hutton, close to the Grammar School
- Two receptions
- Downstairs cloakroom
- Ample private parking
- Viewing highly recommended

Liverpool Road  
Total Approx. Floor Area 1790 Sq.ft. (166.3 Sq.M.)

Surveyed and drawn by Lens Media for illustrative purposes only. Not to scale. Whilst every attempt was made to ensure the accuracy of the floor plan, all measurements are approximate and no responsibility is taken for any error.



Nestled in the pretty village of Hutton, close to the Grammar school, lies a charming period property dating back to Circa.1850. 'Beech House' is surrounded by meticulously manicured grounds and boasts 3/4 bedrooms, 2 reception rooms, a spacious kitchen/diner, family bathroom, utility room and downstairs cloakroom. There is a garage/workshop and ample private parking. Viewing is highly recommended by calling and quoting JB0397. The property is Freehold