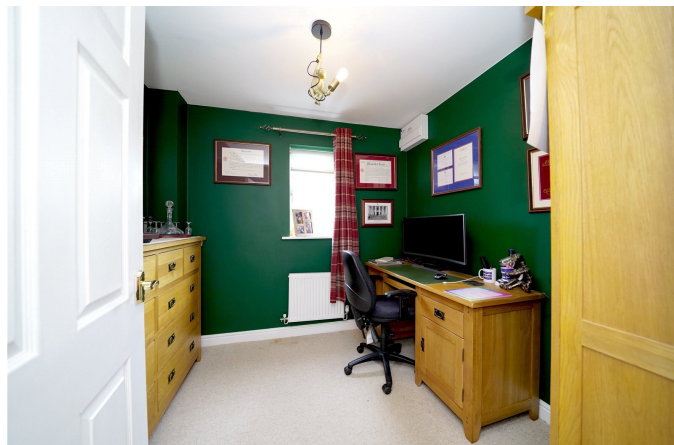


Round House Park, Horsehay, Telford, TF4 3BF

Offers Over £375,000

5 3 3



REFERENCE NUMBER REQUIRED TO BOOK VIEWING

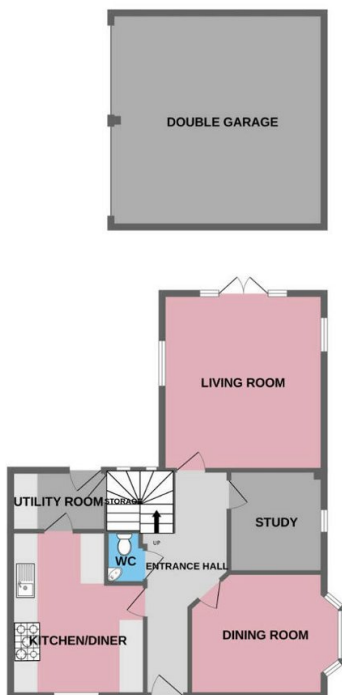
REF - CG0525

WELCOME to this spacious FIVE BEDROOM, THREE RECEPTION ROOM, THREE BATHROOM TOWNHOUSE with a spacious kitchen, utility room, downstairs WC and a DOUBLE GARAGE located in the beautiful area of HORSEHAY, TELFORD. This property is a MUST for a FAMILY HOME offering FANTASTIC SPACIOUS LIVING.

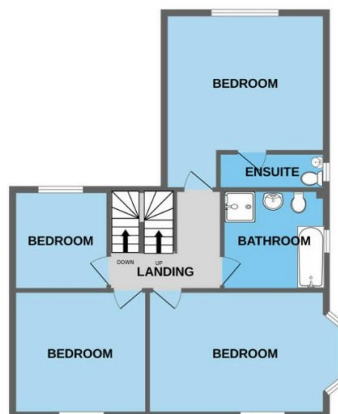
Round House Park is excellently located being within close proximity to Junction 6 of the M54, the world heritage site of Ironbridge is a 5 minute drive away. Thomas Telford is within easy reach and Lightmoor Village primary schools and Telford town centre / Telford railway station.

- FIVE BEDROOM TOWNHOUSE
- THREE BATHROOMS AND GROUND FLOOR WC
- MUST BE VIEWED TO BE APPRECIATED
- GARDEN TO REAR
- COUNCIL TAX BAND - F
- THREE RECEPTION ROOMS
- FANTASTIC FAMILY HOME
- DOUBLE GARAGE
- FREEHOLD TENURE
- EPC RATING C

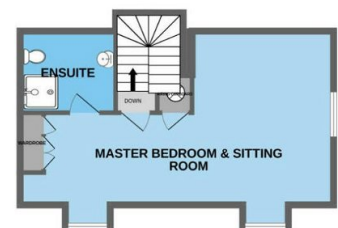
GROUND FLOOR



1ST FLOOR



2ND FLOOR



Made with Metropix ©2023