



IAN PATERSON

exp<sup>®</sup> UK

@ ian.paterson@exp.uk.com

🌐 ianpaterson.exp.uk.com

📞 07875 946 183

# 51 Meadow Drive, Hampton-in-Arden

£190,000

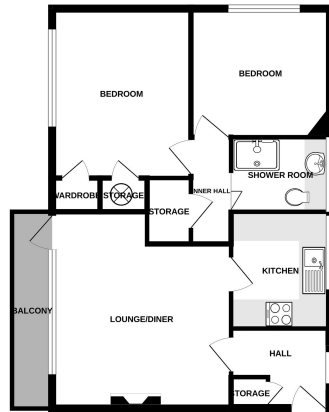
🛏️ 2 🚿 1 🚻 1



QUOTE REF: IP0768 WHEN CALLING FOR MORE INFORMATION OR TO ARRANGE A VIEWING. Sitting on the first floor of and nestled within this well regarded development and location is a two double bedroom flat that is sure to suit the needs of a host of potential buyers. Those looking for a home will be attracted by the size and location, and those looking for an investment will be attracted by its prime location and communication links. Having the added benefits of a garage and a lease with some 129 years left, it very briefly comprises; communal entry and staircase, hallway, storage, lounge/ diner opening onto a balcony with bucolic views. Fitted kitchen, inner hall with storage, master double bedroom with built in wardrobes, further double bedroom and a modern shower room/wc. This cosy home is warmed by electric heaters and kept warm by way of PVCu double glazing. Externally, the property sits within fine communal as well as the flat having its own garage. This really is in a prime position with transport links via the motorway network, train and Birmingham International Airport. View early, or, miss out. As per Section 21 of the Estate Agents Act 1979, this property is owned by a relative of the selling agent.



GROUND FLOOR



While every effort has been made to ensure the accuracy of the floorplan, the measurements of the rooms shown herein are for guidance only and should not be relied upon for the purpose of purchasing the property. The services, fixtures and appliances shown have not been tested and are operated at the applicant's discretion only.

