



Rudyard Avenue, Roseworth

Offers In Region Of £93,500

🛏 2 🚽 1

QUOTE REF: IP0768 WHEN CALLING TO ARRANGE YOUR VIEWING, OR, FOR MORE INFORMATION. Great location and sure to attract a great deal of interest. Good sized plot with gardens front & rear, lounge and kitchen/diner, two double bedrooms. Gas CH via combi & pvcU DG. Great first buy or buy to let.

- GREAT LOCATION
- CLOSE TO NORTH TEES HOSPITAL
- GOOD LOCAL SCHOOLS NEAR BY
- NICELY PRESENTED
- LOVELY LOUNGE
- GOOD SIZED KITCHEN/ DINING ROOM

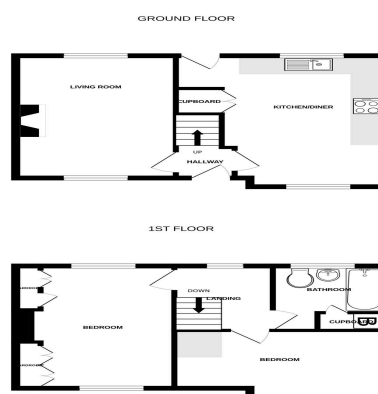
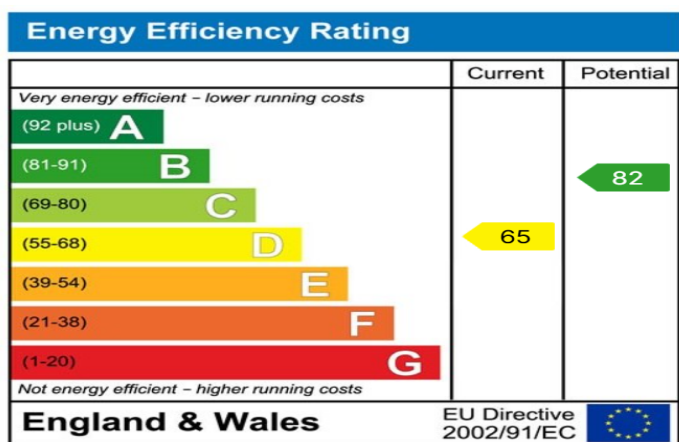


Floor Area: 764 sq. ft.

Tenure: Freehold

Service Charge: £0 per annum

Ground Rent: £0 per annum



Visual energy assessment has been made to ensure the accuracy of the European standard home energy rating. The energy rating is based on the energy performance of the building and is not a measure of the energy performance of the building. The energy rating is based on the energy performance of the building and is not a measure of the energy performance of the building. The energy rating is based on the energy performance of the building and is not a measure of the energy performance of the building.