

26 Cornforth Avenue,

Guide Price £82,500

2 1 1

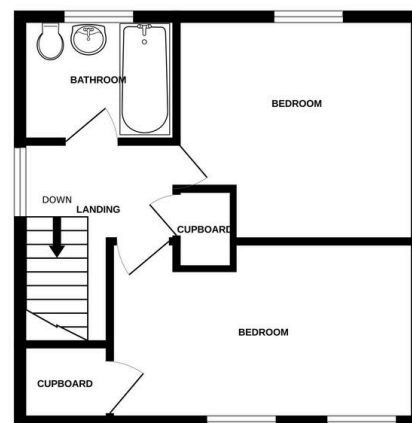


- SEMI DETACHED HOUSE
- GAS CENTRAL HEATING
- PVCu DOUBLE GLAZING
- TWO DOUBLE BEDROOMS
- MODERN KITCHEN
- MODERN BATHROOM
- GREAT FIRST BUY
- GREAT BUY TO LET
- NO FORWARD CHAIN
- EPC RATING C

GROUND FLOOR



1ST FLOOR



Whilst every attempt has been made to ensure the accuracy of the floorplan contained here, measurements of doors, windows, rooms and any other items are approximate and no responsibility is taken for any error, omission or mis-statement. This plan is for illustrative purposes only and should be used as such by any prospective purchaser. The services, systems and appliances shown have not been tested and no guarantee as to their operability or efficiency can be given.
Made with Metropix ©2025

QUOTE REF: IP0768 WHEN CALLING TO ARRANGE YOUR VIEWING, OR, FOR MORE INFORMATION. Great first foot on the property ladder, or a buy to let investment. Semi detached house with gas central heating and PVCu double glazing.