

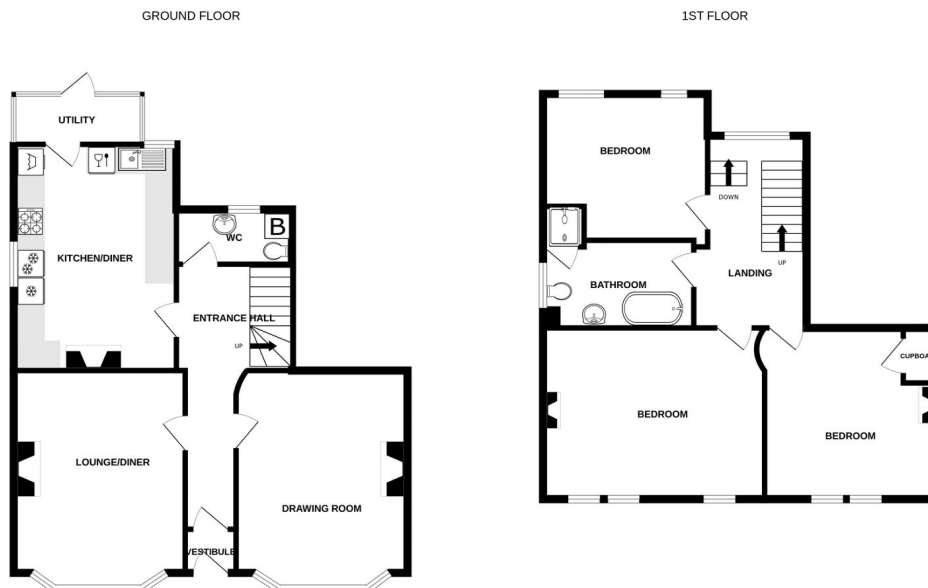
Beaconsfield House, The Avenue, Linthorpe, TS5 6QT

Offers In Region Of £288,000

3 1 2



- FABULOUS SEMI DETACHED HOME
- WONDERFUL ARCHITECTURE
- SUPERB PRESENTATION
- MODERN IMPROVEMENTS INCLUDING PVCu DOUBLE GLAZING
- DRAWING ROOM
- LOUNGE DINER
- KITCHEN DINER WITH INTEGRAL WHITE GOODS
- AMPLE OFF STREET PARKING
- THREE DOUBLE BEDROOMS
- GAS CH VIA A COMBI BOILER



Whilst every attempt has been made to ensure the accuracy of the floorplan contained here, measurements of doors, windows, rooms and any other items are approximate and no responsibility is taken for any error, omission or mis-statement. This plan is for illustrative purposes only and should be used as such by any prospective purchaser. The services, systems and appliances shown have not been tested and no guarantee as to their operability or efficiency can be given.
Made with Metropix ©2024

QUOTE REF: IP0768 WHEN CALLING FOR MORE INFORMATION OR TO ARRANGE A VIEWING. A quite lovely semi detached home sitting in this very well regarded area of Linthorpe. Built circa 1897 it incorporates both Victorian and Edwardian architectural features thus creating a handsome semi detached home.