

## Adela Avenue, Motspur Park, KT3

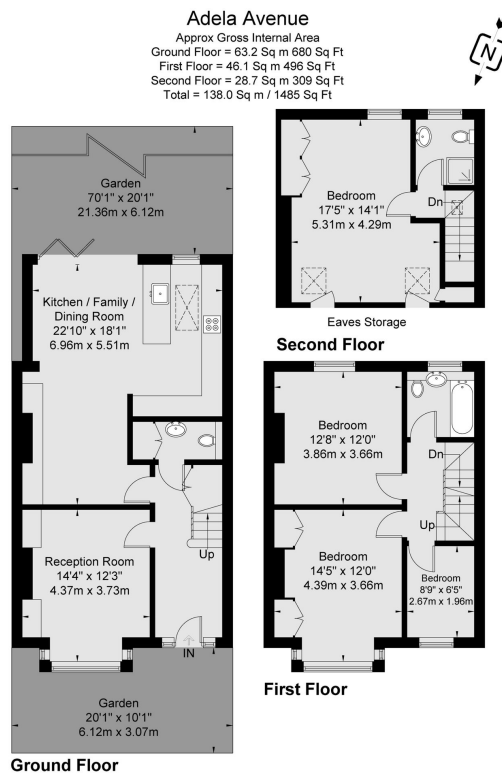
£885,000

🛏️ 4 🚿 2 🚗 2



Wonderful four bedroom terraced family home (1,485 Sq.Ft) with delightful private garden, ideally situated in a sought after residential location close to Motspur Park station, schools and amenities. Perfectly blending comfort and convenience, the property provides light and spacious accommodation, superbly extended and beautifully appointed with stylish interiors and high quality finish throughout. Property Ref: DA0587

- Wonderful Four Bedroom Terraced Family Home (1,485 Sq.Ft)
- Extended Accommodation with Stylish Interiors
- Fantastic Kitchen/Reception/Diner Opening onto the Garden
- Attractive Private Garden
- Easy Access Shops, Schools and Amenities
- Sought After Residential Location
- Beautiful Reception Room
- Upstairs Bathroom, Principal En-Suite and Guest WC
- Close to Motspur Park Station
- Property Ref: DA0587



Viewmedia © 2023  
Viewmedia.co.uk

Whilst every attempt has been made to ensure the accuracy of this floor plan, measurements of doors, windows and rooms are approximate and no responsibility is taken for any error or omission. This illustration is for identification purpose only. Measured and drawn accordance with RICS guidelines. Not drawn to scale, unless stated. Dimensions shown are to the nearest 3" and are to the points indicated by the arrow heads.