

## Baroque Gardens, Grand Canal Avenue, SE16

£2,500PCM (Deposit: £2,884)

🛏 2 🍳 2 🛋 1

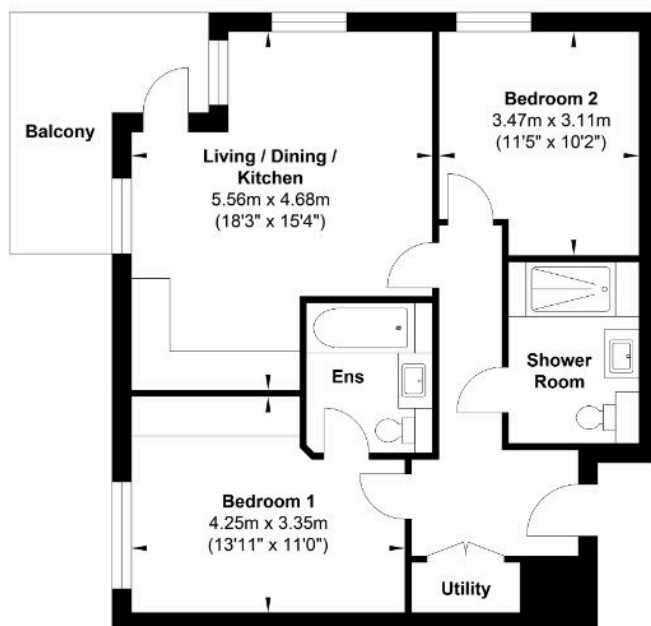


Tax Band: E

Furnished: Furnished

- Available Now
- Open Plan Lounge/Kitchen
- Balcony
- Two Double Bedrooms
- Primary Bedroom with Ensuite
- Family Bathroom
- Residents Gym
- 24 Hour Concierge
- Water Gardens
- EPC Rating B

### 13 Baroque Gardens



Gross Internal Floor Area : 65.4 m2 ... 703 ft2

Whilst every attempt has been made to ensure the accuracy of the floor plan contained here, measurements of doors, windows, rooms and any other items are approximate and no responsibility is taken for any error, omission, or mis-statement. This plan is for illustrative purposes only and should be used as such by any prospective purchaser. The services, systems and appliances shown have not been tested and no guarantee as to their operability or efficiency can be given.

Please Quote Ref DG0640. AVAILABLE NOW & OFFERED FURNISHED is this superb two-bedroom, two-bathroom corner apartment situated on the 2nd floor of Baroque Gardens, Marine Wharf, SE16. Residents benefit from exclusive access to a gym, 24-hour concierge, and beautiful water gardens. The apartment features a spacious open-plan lounge and kitchen with high-spec Bosch appliances, including a dishwasher, integrated microwave, oven, and fridge/freezer. The dual-aspect balcony offers picturesque views of the landscaped park and water gardens.