

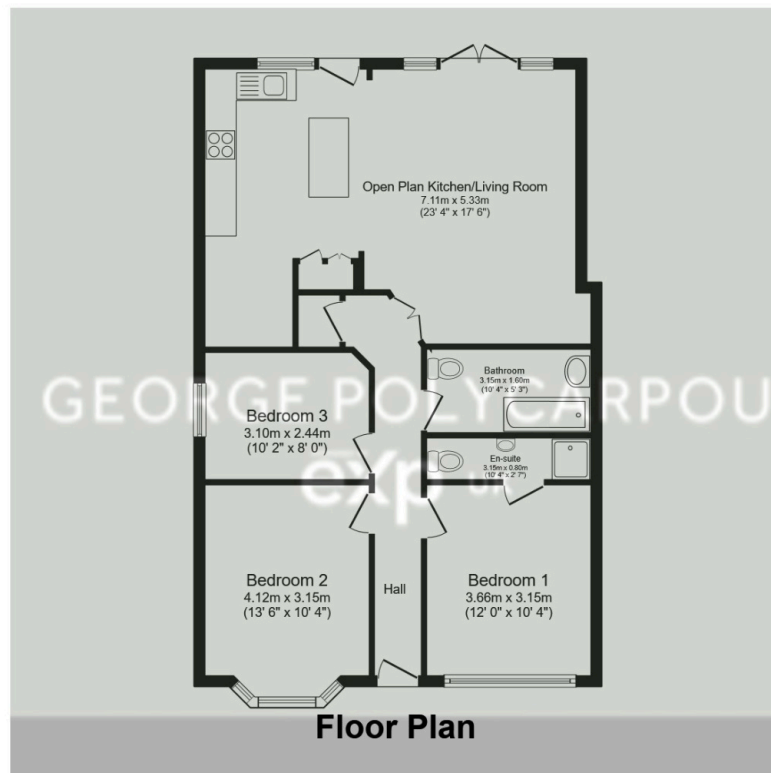
Carpenders Avenue, Watford, WD19 5BW

£599,950

3 2 1



- Semi Detached Bungalow
- Two Bathrooms
- Extended To Rear
- Off Street Parking
- Planning Permission To Extend Into Loft
- Three Double Bedrooms
- Recently Updated Throughout
- Private South Facing Garden
- 0.3 Miles Away From Carpenders Park Station
- Marketed By George Polycarpou - REF/ GP0453



Total floor area 85.5 sq.m. (920 sq.ft.) approx

This plan is for illustration purposes only and may not be representative of the property. Plan not to scale. Powered by PropertyBox

This three bedroom extended semi detached family home is set in a favoured location convenient for local amenities and transport links. The accommodation comprises of three double bedrooms, two bathrooms (one ensuite) and a spacious and recently modernised open plan kitchen with large living space both with underfloor heating. The property also benefits from off street parking, an electric car charging point, a private south facing garden and has planning currently in place to extend into the loft.