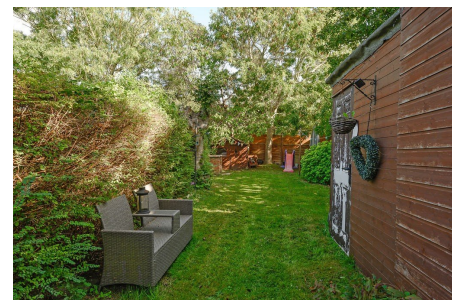


Aboyne Drive, Raynes Park, SW20

£380,000

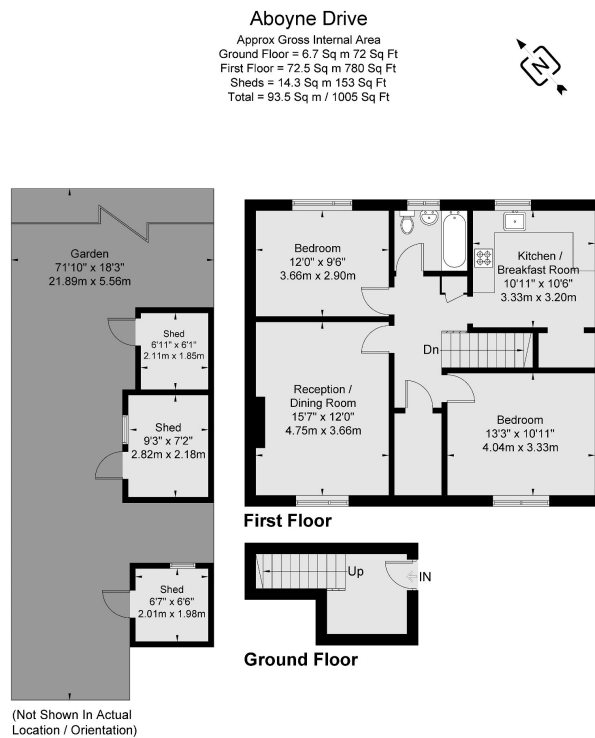
🛏 2 🚿 1 🚗 1



Beautifully presented two double bedroom first floor maisonette (780 Sq.Ft) with delightful private garden, conveniently situated close to excellent transport links and amenities. Beautifully maintained by the current owners, the property offers light and airy accommodation with modern interiors, neutral decor, and quality finish throughout - ideal for homeowner or investor alike. Features include an inviting reception room, separate well equipped eat-in kitchen, modern bathroom, gas central heating, double glazing, quality floor coverings, and useful inbuilt storage.

Key Features

- Well Presented Two Double Bedroom First Floor Maisonette (780 Sq.Ft)
- Bright and Spacious Reception Room
- Modern Bathroom
- Own Entrance
- Close to Excellent Transport Links and Amenities
- Spacious Accommodation with Modern Interiors
- Separate Well Equipped Eat-In Kitchen
- Delightful Private Garden
- Gas Central Heating and Double Glazing
- Property Ref: DA 0587LC



Viewmedia © 2023
Viewmedia.co.uk

Whilst every attempt has been made to ensure the accuracy of this floor plan, measurements of doors, windows and rooms are approximate and no responsibility is taken for any error or omission. This illustration is for identification purpose only. Measured and drawn accordance with RICS guidelines. Not drawn to scale, unless stated. Dimensions shown are to the nearest 3" and are to the points indicated by the arrow heads.