



DANIEL ARCHER

exp<sup>®</sup> UK

@ daniel.archer@exp.uk.com

🌐 danielarcher.exp.uk.com

☎ 07792 947 756

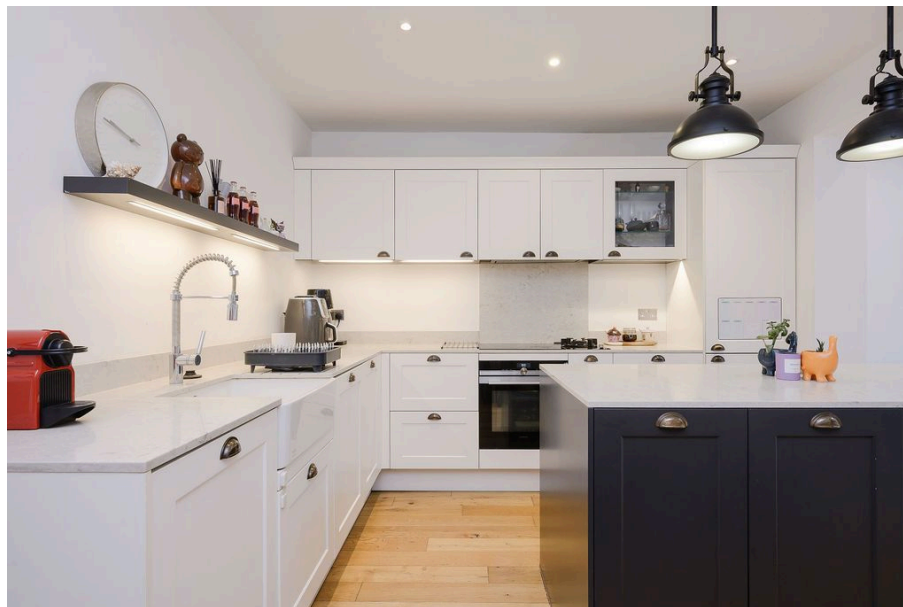


## Prince Georges Avenue, Raynes Park, SW20

Guide Price £950,000

🛏 3 🚿 2 🛋 2

- Stunning Three Double Bedroom Period Style Family Home (1,141 Sq.Ft)
- Extended Accommodation with Period Appeal and Stylish Interiors
- Impressive Open Plan Kitchen/Diner/Family Room
- Spacious Second Floor Principal Bedroom Suite
- Close to Raynes Park Station and Amenities
- Sought After Location and Well Positioned for Hollymount School
- Inviting Front Aspect Reception Room
- Two Bath/Shower Rooms (One En-Suite)
- Gorgeous Garden with New Decked Terrace and Custom-Built Playhouse/Shed
- Property Ref: DA 0587



Stunning three bedroom family home (1,141 Sq.Ft) with gorgeous garden, superbly situated close to Raynes Park station, and well positioned in the road for access to popular nearby Hollymount School. The property has been significantly extended and superbly appointed by the current owners, offering bright and spacious accommodation with enormous period appeal, elegant interiors, and high quality finish throughout. Ideal for modern family life, with flowing living space creating the perfect blend of comfort and convenience, this impressive home is not to be missed. Features include an inviting reception, impressive kitchen/diner/family room, two bath/shower rooms (one en-suite), gas central heating, double glazing, quality floor coverings, and ample inbuilt storage.

Externally, the garden provides the perfect space for al fresco entertaining, with a brand new decked terrace – ready for the summer! - and custom built playhouse/shed.





