

Hardwick Green, West Ealing, W13

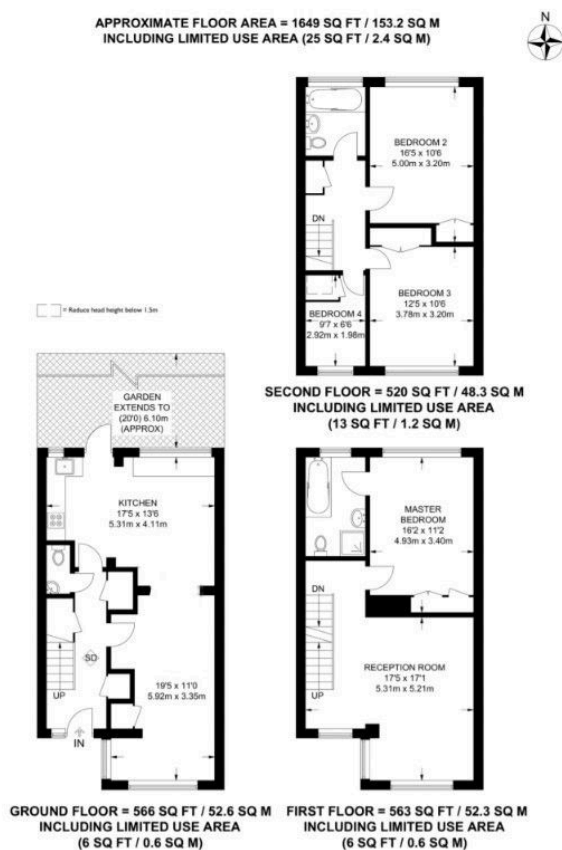
£3,250 - £3,500 PCM

4 2 2



Tax Band: F
Furnished:
Unfurnished

- Quote MG1175 for all enquiries
- 2 Bathrooms (1 Ensuite)
- 2 Reception rooms
- Fully Refurbished Throughout
- Moments from Cleveland Park
- 4 Bed House
- Parking for 2 cars
- Garden
- Close to Pitshanger Village
- Brilliant schools nearby



This beautifully refurbished four-bedroom family home offers generous, well-planned living space across three floors and is finished to an exceptional standard throughout. Ideal for families or professional tenants seeking space, style and convenience. Further benefits include off-street parking for two cars.