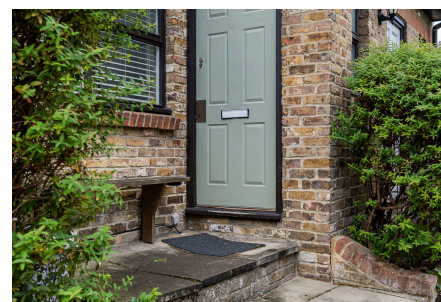


46 Croftongate Way,

Guide Price £275,000 - £285,000

1 bed 1 bath 1 car

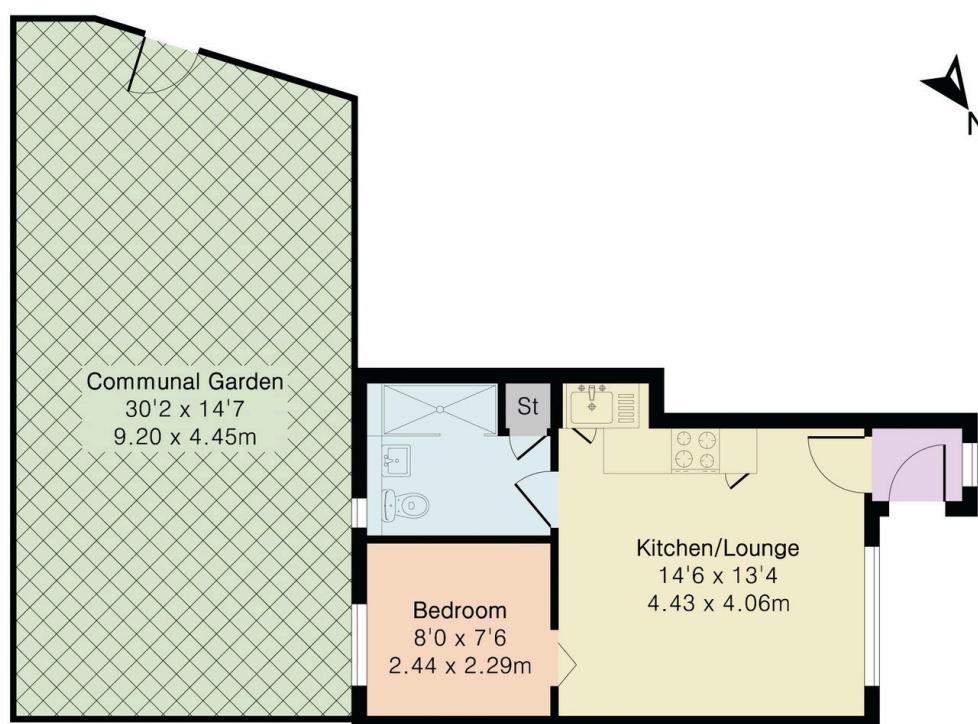


Please Quote Ref AA1262 For All Enquiries - GUIDE PRICE £275000 - £285,000 - Gorgeous one bedroom ground floor flat (309 Sq.Ft) with own entrance, private parking space and access to communal gardens, superbly situated in a quiet cul-de-sac location just a short walk from Crofton Park station and amenities. The property offers bright accommodation with stylish interiors and neutral decor throughout - ideal for first time buyer or investor alike. Features include an inviting open plan reception/kitchen, modern shower room, electric heating, double glazing, and quality floor coverings.

Key Features

- Please Quote Ref AA1262 For All Enquiries
- Cul-de-Sac Location
- Bright Open Plan Reception/Kitchen
- Own Entrance and Private Parking Space
- Short Walk to Crofton Park Station
- Gorgeous One Bedroom Ground Floor Flat (309 Sq.Ft)
- Modern Interiors and Neutral Finish
- Guide Price £275,000 - £285,000
- Communal Gardens
- Easy Access Shops and Amenities

Approximate Gross Internal Area 309 sq ft - 29 sq m



Ground Floor