



ALEX BRITEZ CABRAL

exp<sup>®</sup> uk

@ alex.cabral@exp.uk.com

alexbritezcabral.exp.uk.com

07774 123 444



## Eldon Avenue, Borehamwood, WD6

Guide Price £300,000 - £310,000

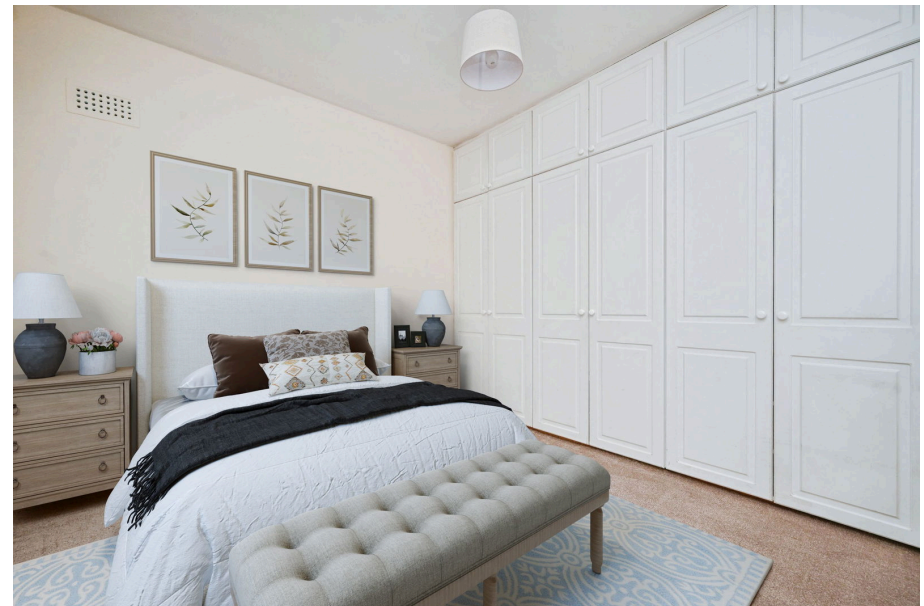
2 1



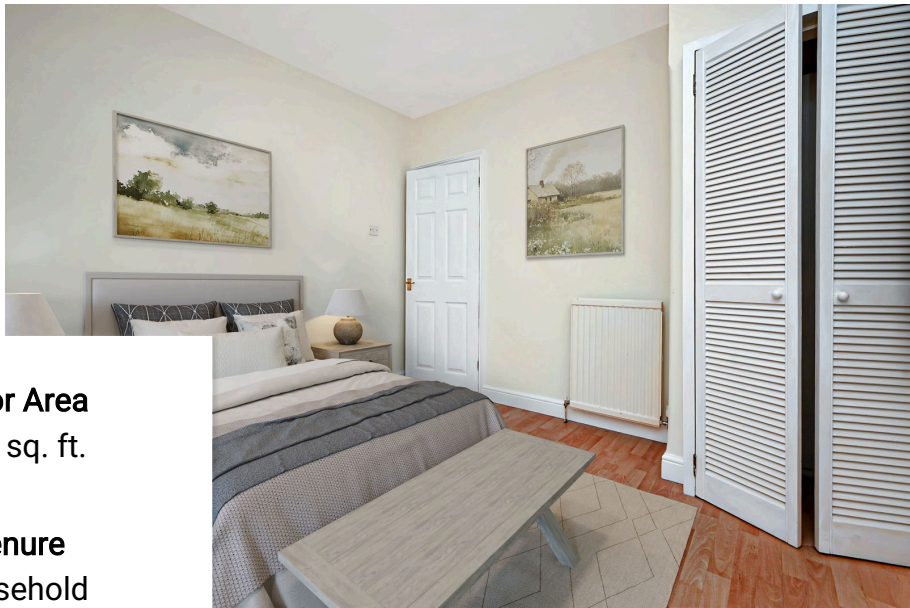
**QUOTE AB0697**

**Guide Price - £300,000 - £310,000**

A spacious and lateral two bedroom ground floor maisonette situated close to the centre of Borehamwood. Offering almost 630 Sq Ft of living space, this property comes to market chain free, benefits from just having been decorated and newly carpeted throughout, and would be ideal for first time buyers or investors alike. Elstree and Borehamwood Station (Overground) is close by and offers excellent transport links into London via Thameslink. The many local amenities Borehamwood are also close by, as are the green open spaces of Aberford Park.







**Floor Area**  
623 sq. ft.

**Tenure**  
Leasehold

**Service Charge**  
£0 per annum

**Ground Rent**  
£200 per annum



Total floor area 57.9 sq.m. (623 sq.ft.) approx

This floor plan is for illustrative purposes only. It is not drawn to scale. Any measurements, floor areas (including any total floor area), openings and orientation are approximate. No details are guaranteed, they cannot be relied upon for any purpose and they do not form part of any agreement. No liability is taken for any error, omission or misstatement. A party must rely upon its own inspection(s). Powered by [www.focalagent.com](http://www.focalagent.com)

