

**Mosslea Road, Bromley BR2**

Guide Price £900,000

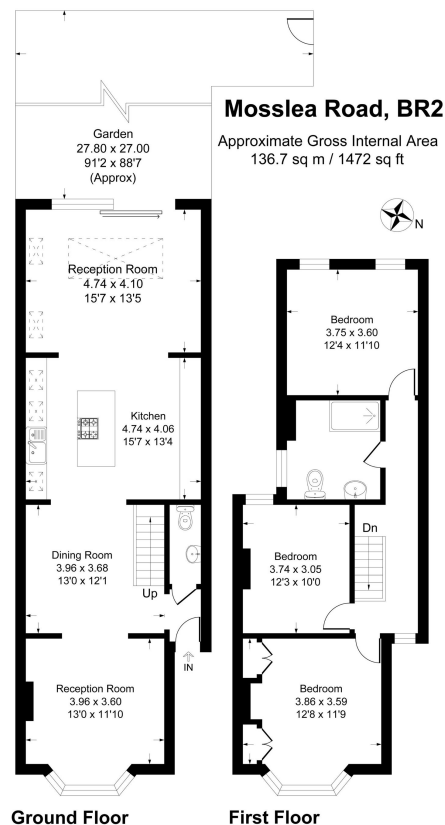
3 1 3



Please Quote Ref SM1300 For All Enquiries - A beautifully extended and thoughtfully remodelled Edwardian detached house (1472 sq ft) featuring open plan living and a generous west-facing garden, superbly positioned in the vibrant heart of Chatterton Village, moments from Bromley Town Centre and convenient for Raglan Primary School.

## Key Features

- Beautifully remodelled, extended, Edwardian detached house with 3 double bedrooms
- Stylish fitted kitchen with central island, bespoke quartz worktops, skylights and luxury flooring
- Exceptional family shower room with additional ground floor WC
- Chatterton Village shops and restaurants within walking distance
- Convenient for Raglan Primary, Bromley High School and Bromley College
- Chain free
- Open plan kitchen/dining/living room/study
- Extensive, west facing, L-shaped garden with scope for landscaping
- Nearby green spaces include Whitehall Recreation Ground and Norman Park
- Excellent transport connections to London and the South East via Bromley South & Bickley Stations



This plan is for layout guidance only. Not drawn to scale unless stated. Windows and door openings are approximate. Whilst every care is taken in the preparation of this plan, please check all dimensions, shapes and compass bearings before making any decisions reliant upon them.  
Produced By Plangit