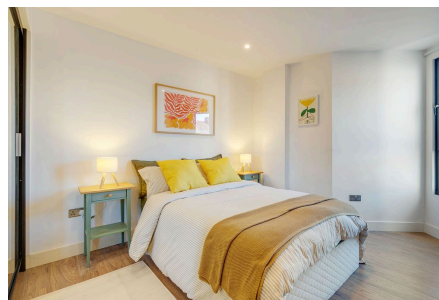
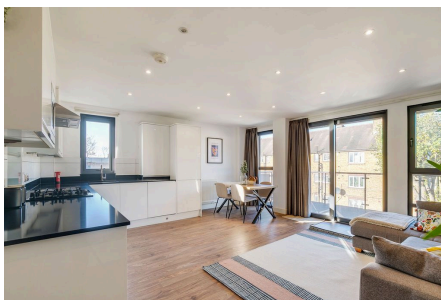


Tooting High Street, Tooting, SW17

£550,000

🛏 2 🚿 2 🛋 1

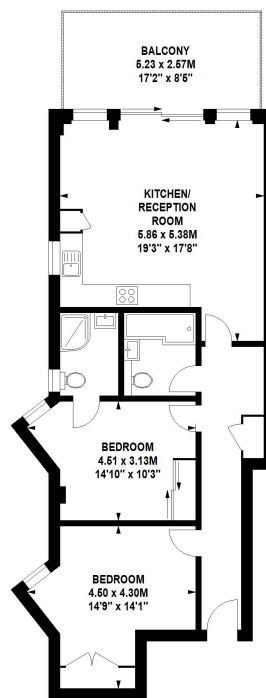


PLEASE QUOTE MR0560 - Set in a sought after modern development in the heart of Tooting, this beautifully presented two double bedroom, two bathroom, third floor apartment (804 Sq.Ft) with private balcony and allocated parking. The property offers light and spacious accommodation with modern interiors and high quality finish throughout, - perfect for a modern lifestyle in this fantastic central location, just a short walk from fantastic transport links and a hive of vibrant shops and amenities. Features include a generous open plan reception/kitchen, two bath/shower rooms (one en-suite), gas central heating, double glazing, wood effect flooring, ample inbuilt storage, secure entry, residents lift, and long lease.

Key Features

- PLEASE QUOTE MR0560
- Modern Development in Heart of Tooting
- Light and Spacious Open Plan Reception/ Kitchen
- Two Bath/Shower Rooms (One En-Suite)
- Allocated Parking
- Stunning Two Bedroom Third Floor Apartment (804 Sq.Ft)
- Stylish Interiors and Quality Finish
- Private Balcony
- Secure Entry and Residents Lift
- Close to Transport Links and Thriving Amenities

Vulcan House, SW17
Approximate gross internal area
74.69 sq m / 804 sq ft



Third Floor

Although every attempt has been made to ensure accuracy, all measurements are approximate.
This floorplan is for illustrative purposes only and not to scale.
Measured in accordance with RICS standards.