



exp UK

12 Hart Yard, London, E3 2FW
London

DAVID GREENSLADE
exp

Guide Price

£600,000



Bedrooms: 2

Bathrooms: 2

Receptions: 1

Offered Chain Free. A Spacious & Modern Two Bed Two Bathroom Apartment with views to the London Stadium and The Orbital located on the 6th floor (top) of The Waterway Building, in the vibrant Fish Island, Hackney Wick.

The heart of the home is the bright and spacious open-plan kitchen/living area, perfect for modern entertaining. The kitchen is fully integrated with quality appliances.

The apartment features two spacious bedrooms, the primary bedroom with its own modern en-suite.

The main bathroom is finished with sleek grey tiling, offering a bathtub, shower, and contemporary fittings.

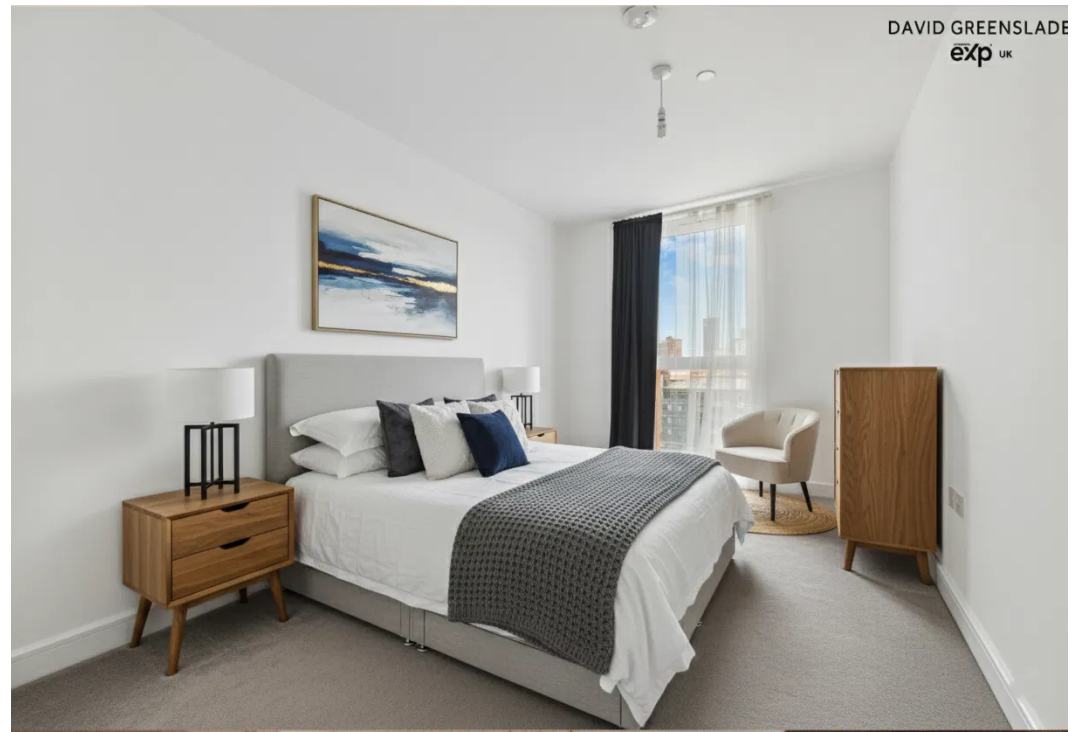
A highlight is the private, East facing balcony. It provides panoramic skyline views that stretch across East London, directly framing the London Stadium and the vast Queen Elizabeth Olympic Park. It's the ideal spot for your morning coffee or unwinding as the city lights up.

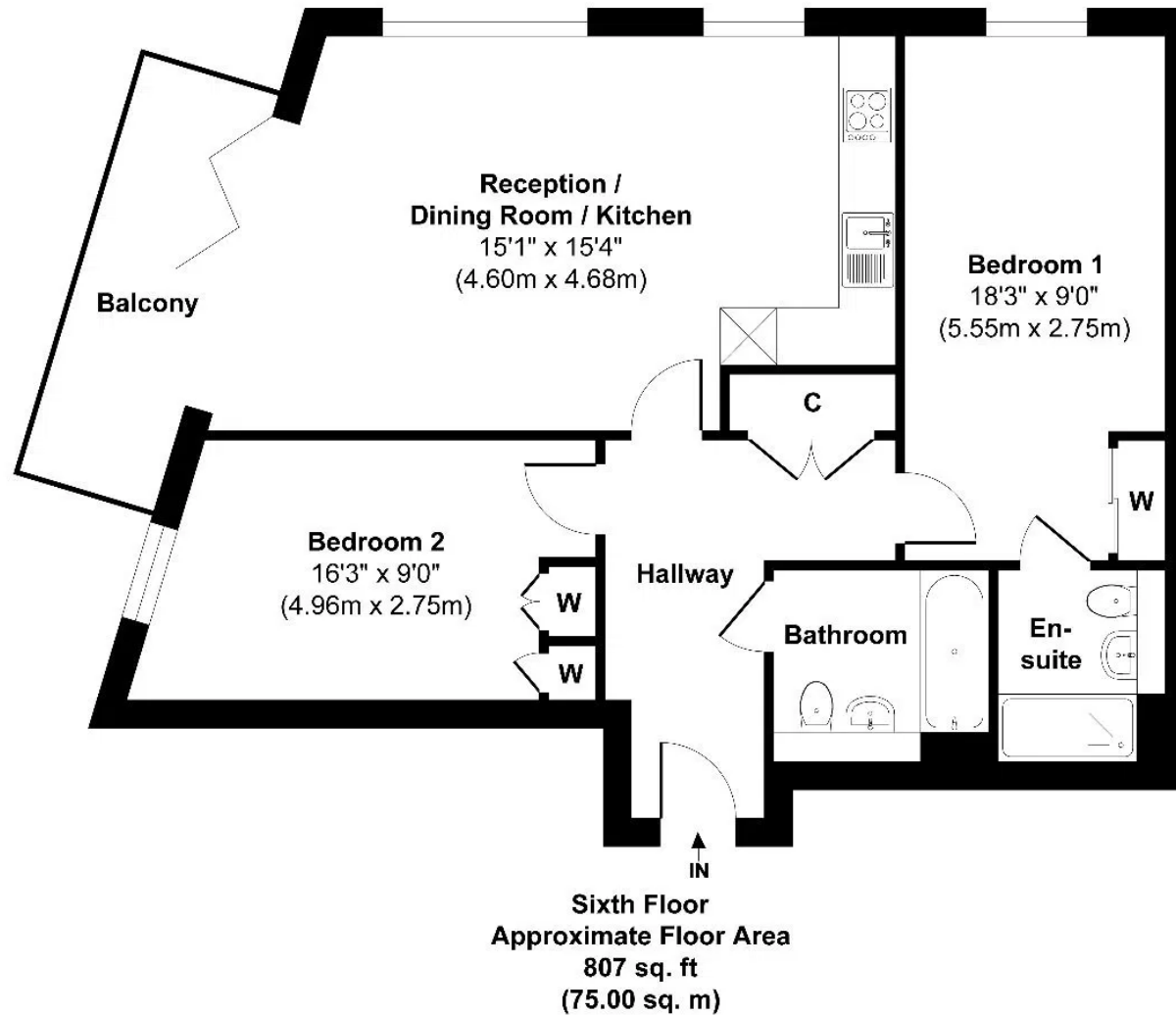
Tenure: Leasehold - 120 years remaining

Local Authority: London Borough of Tower Hamlets

Council Tax Band: D

++ PLEASE NOTE FURNITURE IS CGI GENERATED FOR MARKETING PURPOSES ++





Approx. Gross Internal Floor Area 807 sq. ft / 75.00 sq. m.

Illustration for identification purposes only, measurements are approximate and not to scale, unauthorised reproduction is prohibited.

David Greenslade

G05 Ceram Court 10 Seven Seas Gardens London E3 3GW

DAVID GREENSLADE
exp

02080 500 252

david.greenslade@exp.uk.com
<https://davidgreenslade.exp.uk.com>