



ALEX BRITEZ CABRAL

exp[®] uk

@ alex.cabral@exp.uk.com

alexbritezcabral.exp.uk.com

07774 123 444

Sherwood Park Road, Sutton, SM1

Guide Price £210,000 - £230,000

1 1



QUOTE AB0697

Guide Price - £210,000 - £230,000

An incredibly spacious split level one bedroom conversion flat situated on the top floor of an attractive period property, located in the heart of Sutton. Boasting nearly 600 Sq Ft of living space, this property comes to market chain free and would make a perfect first time buy, or excellent investment purchase. In addition to a fantastic living space, the property also offers access to a large communal garden. Sutton, Sutton Common, and Cheam Stations (Overground) are all close by and offer excellent transport links, while the many local amenities of Sutton are also nearby. Viewing is highly recommended.



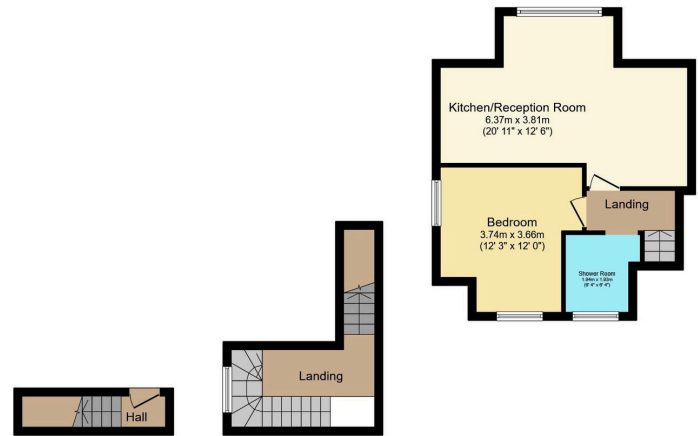


Floor Area
575 sq. ft.

Tenure
Share Of Freehold

Service Charge
£200 per annum

Ground Rent
£ per annum



Ground Floor First Floor Second Floor

Total floor area 53.4 sq.m. (575 sq.ft.) approx

This floor plan is for illustrative purposes only. It is not drawn to scale. Any measurements, floor areas (including any total floor area), openings and orientation are approximate. No details are guaranteed, they cannot be relied upon for any purpose and they do not form part of any agreement. No liability is taken for any error, omission or misstatement. A party must rely upon its own inspection(s). Powered by www.focalagent.com

