

Nelson House, Brook Green, W14

£2,350PCM (Deposit: £2,711)

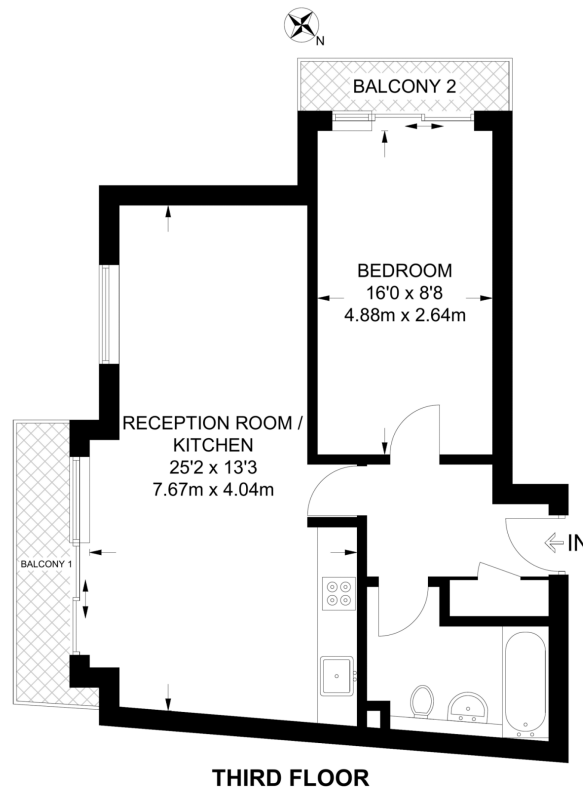
1 1 1



	Current	Potential
Very energy efficient - lower running costs		
(92 plus) A		
(81-91) B	88	89
(69-80) C		
(55-68) D		
(39-54) E		
(21-38) F		
(1-20) G		
Not energy efficient - higher running costs		

Tax Band: C Furnished:
Part Furnished

- Please quote MG1175 for all enquiries
- 2 Private Balconies - South & West Facing
- Open Plan Kitchen/ Reception with floor to ceiling windows
- c. 560 sqft
- Moments from Green Park
- 1 Double Bedroom
- 3rd Floor with Lift Access
- Contemporary Finish Throughout
- Walking distance to multiple transport lines
- Close to shops & restaurants of Westfield Shopping Centre



APPROXIMATE GROSS INTERNAL AREA
564 SQ FT / 52.4 SQ M

This plan has been drawn for illustrative and identification purposes only.

Set within a modern development, this spacious 564 sqft third-floor 1-bedroom apartment is finished to a high standard throughout and benefits from lift access and two private balconies—one south-facing from the reception for all-day sunshine and one west-facing from the bedroom to capture the evening light.