



Mountfield Road, Finchley Central, N3
London

Offers Over
£700,000

Bedrooms: 4 | Bathrooms: 3 | Receptions: 1

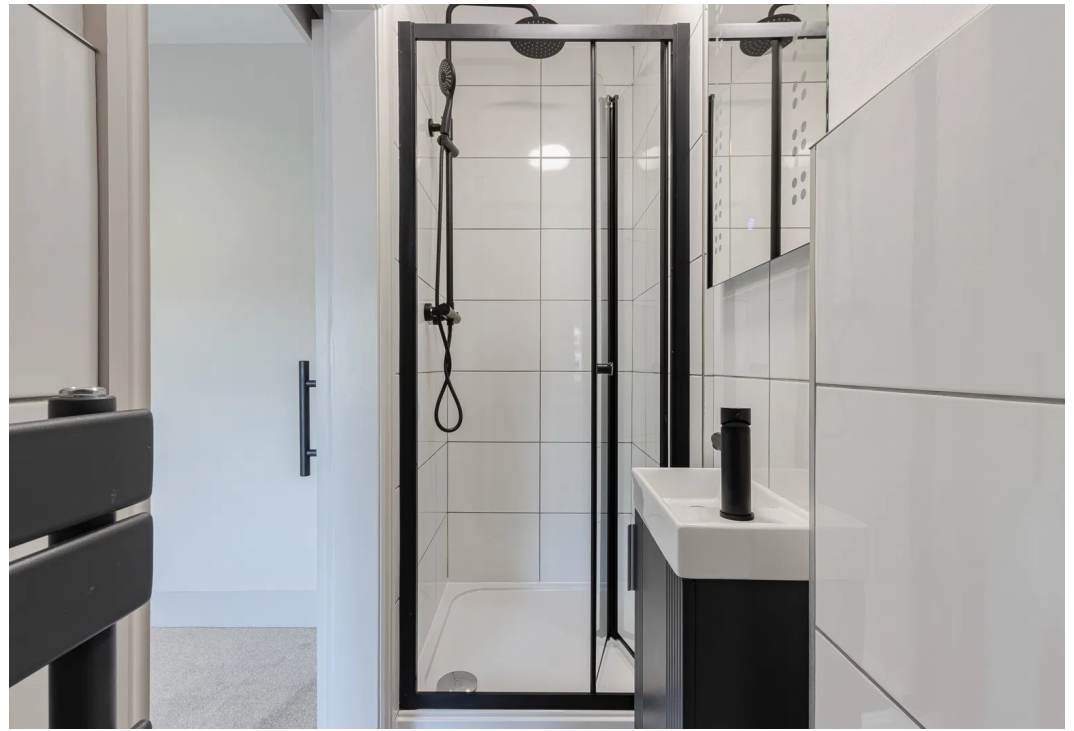
Set on a peaceful residential road between Finchley Central and Temple Fortune, this impressive four-bedroom maisonette has been completely refurbished to offer a stylish and contemporary lifestyle. With a private section of garden and a flexible layout, this 'turnkey' property is being sold chain-free, making it the perfect opportunity for a seamless move.

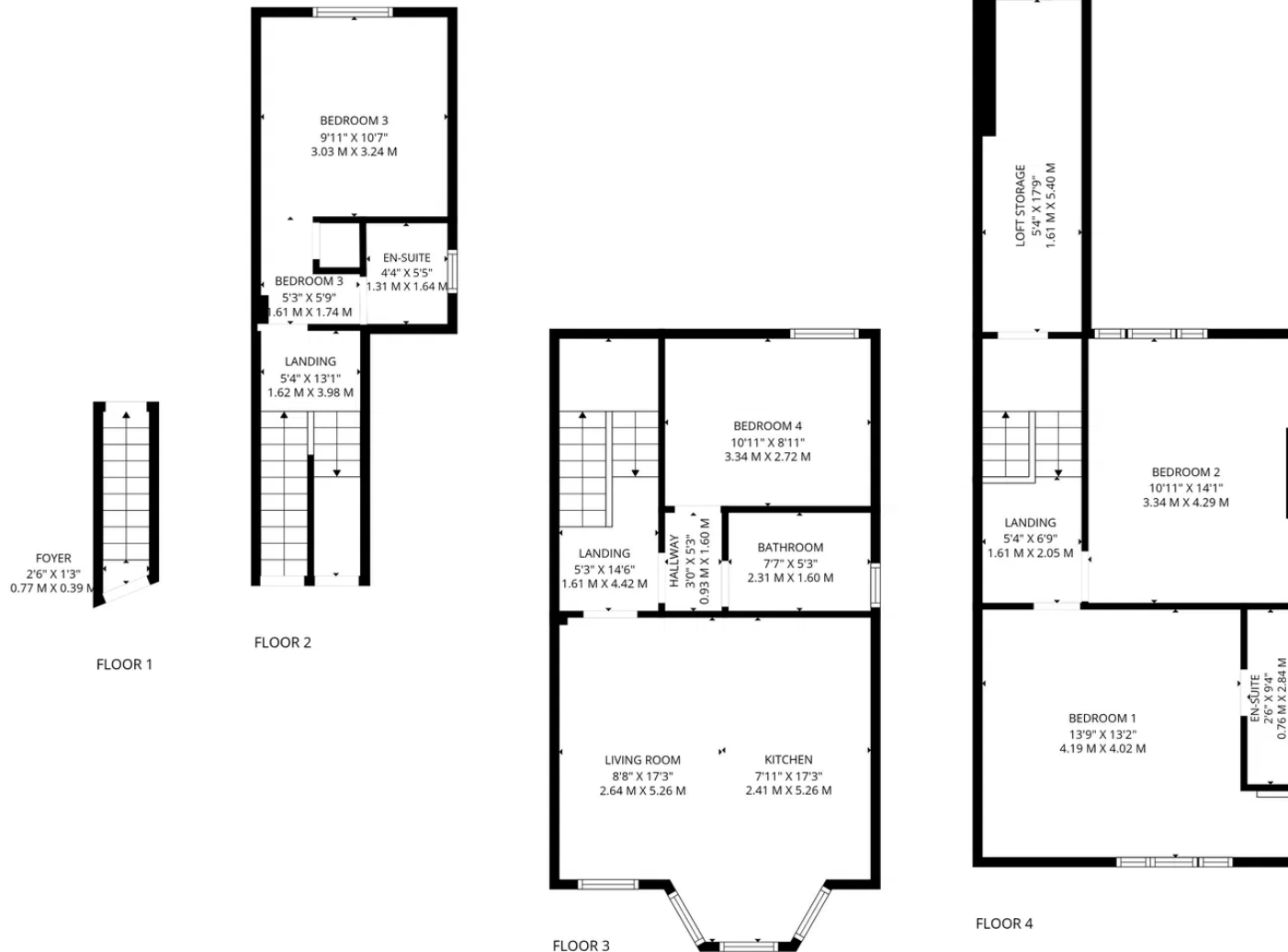
The home unfolds over the first and second floors, beginning with a bright and airy reception room that is flooded with natural light from a large bay window and features elegant wood flooring. This room flows effortlessly into the open-plan kitchen, which is fitted with brand-new, integrated appliances for a clean and sleek finish. The first floor also houses a double bedroom and a beautifully designed family bathroom with striking green tiles and gold fixtures. A further double bedroom on the half-landing has been cleverly designed to function as a self-contained studio, benefiting from its own meter and en-suite bathroom. The top floor is home to the main principal bedroom with a stunning en-suite shower room, as well as another double bedroom. The property also comes with a private section of the garden, accessible from the side of the house.

Situated in a highly sought-after area, the property is a short distance from Finchley Central Station and the array of coffee shops and restaurants on Ballards Lane. The area is home to outstanding schools, including Brookland Infant and Nursery School and Christ's College Finchley. For those who enjoy an active lifestyle, the David Lloyds Club, Finchley Rugby and Football Club, and Highgate and Finchley Cricket Clubs are all nearby, while local parks like Windsor Open Space and Victoria Park provide beautiful green spaces for relaxation.

Quote ref: EW0808 to arrange a viewing.







TOTAL: 1142 sq. ft, 106 m2

BELOW GROUND: 23 sq. ft, 2 m2, FLOOR 2: 233 sq. ft, 22 m2, FLOOR 3: 498 sq. ft, 46 m2, FLOOR 4: 388 sq. ft, 36 m2

EXCLUDED AREAS: LOFT STORAGE: 94 sq. ft, 9 m2, LOW CEILING: 71 sq. ft, 7 m2, WALLS: 165 sq. ft, 15 m2

FLOOR PLAN CREATED BY CUBICASA APP. MEASUREMENTS DEEMED HIGHLY RELIABLE BUT NOT GUARANTEED.



Euan Williams
21, Millson Close, London

07855 219 488
euan.williams@exp.uk.com
<https://euanwilliams.exp.uk.com/>