



GEORGE SHISHKOVSKY

exp<sup>®</sup> UK

@ [george.shishkovsky@exp.uk.com](mailto:george.shishkovsky@exp.uk.com)

🌐 [georgeshishkovsky.exp.uk.com](http://georgeshishkovsky.exp.uk.com)

☎ 07970 200 142



# Faulkner House, Fulham Reach, London W6

Guide Price £1,090,000

🛏 2 🍳 2 🛋 1





Quote ref GS1270 - Positioned on the fourth floor of Faulkner House (with lift), this exceptional two-bedroom apartment offers a rare combination of riverside living, private parking, and access to first-class resident amenities – all within the prestigious Fulham Reach development by St George. Spanning approximately 931 sq ft (86.5 sqm), the apartment enjoys a bright and spacious layout. The open-plan reception and dining area is enhanced by floor-to-ceiling windows, elegant wood flooring, and direct access to a generous balcony with views of the landscaped boulevard and towards the River Thames – a space shared with the second bedroom. The kitchen is sleek and modern, fitted with Siemens appliances and finished to an impeccable standard.

The principal bedroom features an en-suite bathroom and a large built-in wardrobe, while the second double bedroom also offers ample storage. A stylish family bathroom and a separate utility cupboard complete the accommodation. Additional features include underfloor heating, air conditioning, and high-quality finishes throughout – including Villeroy & Boch bathroom fittings and soft carpets in the bedrooms.

Fulham Reach is a lifestyle destination in itself. Residents benefit from a luxury spa with swimming pool, sauna, steam room, and treatment room, as well as a private screening room, snooker room, wine tasting and storage facilities, and a virtual golf suite. The development also boasts a riverside promenade, landscaped gardens, and tranquil water features.

Located moments from Hammersmith Broadway and its excellent transport links (Hammersmith & City, Circle, District, and Piccadilly lines), this apartment is ideal for professionals or investors seeking premium London living in a well-connected riverside setting.

Offered chain-free with secure underground parking.

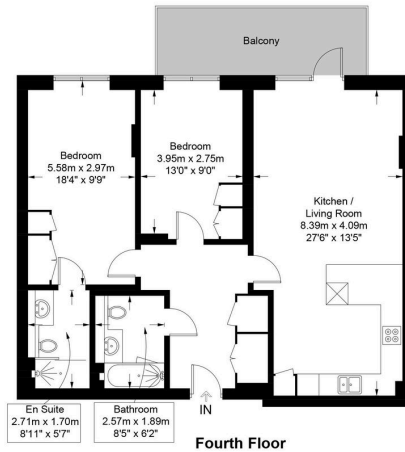
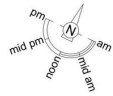
Service charge - £7345 p/a

Ground rent - £520 p/a



# Faulkner House, W6

Approximate Gross Internal Area = 931 sq ft / 86.5 sq m



- Quote ref GS1270
- 4th floor (with lift)
- Parking included
- 931 sq ft / 86.5 sqm
- 2 bedrooms
- 2 bathrooms (1 en-suite)
- Balcony
- Swimming pool & spa
- 24 Hour Concierge
- Residents gymnasium

