



Maestro Apartments, Violet Road, E3

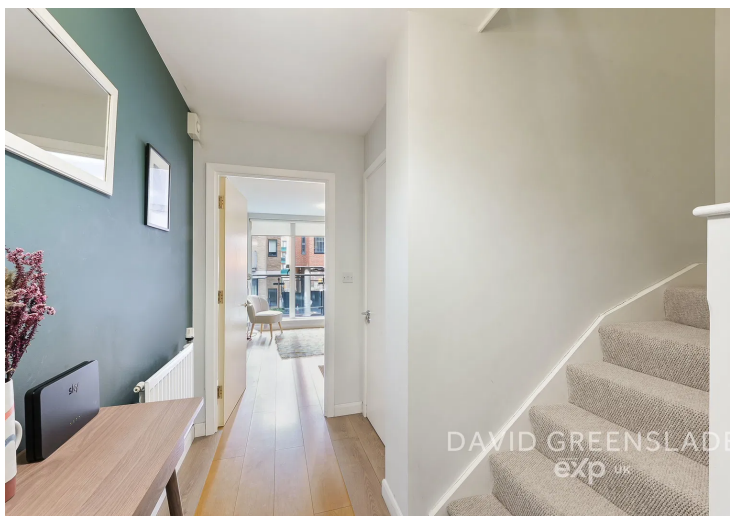
Offers Over **£350,000**

- CHAIN FREE
- OPEN PLAN
- TWO DOUBLE BEDROOMS
- COMMUNAL ROOF TERRACE
- NEXT TO THE LIMEHOUSE CUT
- DUPLEX APARTMENT
- TWO BALCONIES
- CLOSE TO DLR
- SECURE BIKE STORAGE
- PLEASE QOUTE REF: DG0640

Bedrooms: 2 | **Bathrooms:** 2 | **Receptions:** 1

Council Tax Band: D -Tower Hamlets

Tenure: Leasehold - 114 Years Remaining





West facing duplex apartment in the pet friendly Maestro Apartments. With two double bedrooms and two private balconies.

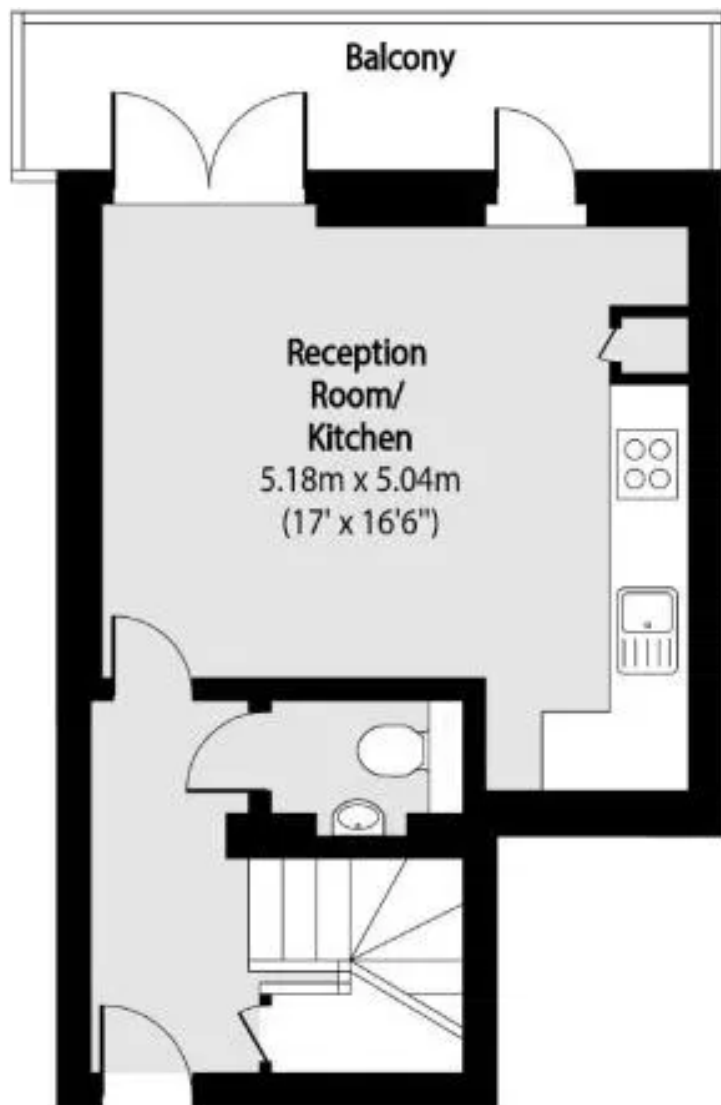
Arranged over two floors, with the first floor offering a spacious open plan lounge with access to a balcony and the kitchen featuring integrated appliances. There is also a toilet on this floor for convenience. On the second floor you have two generously sized bedrooms, both with access to the second balcony along with a modern bathroom.

The apartment also benefits from access to a large communal roof terrace with stunning city views, secure bike storage, and an on site gym (monthly membership fee applies).

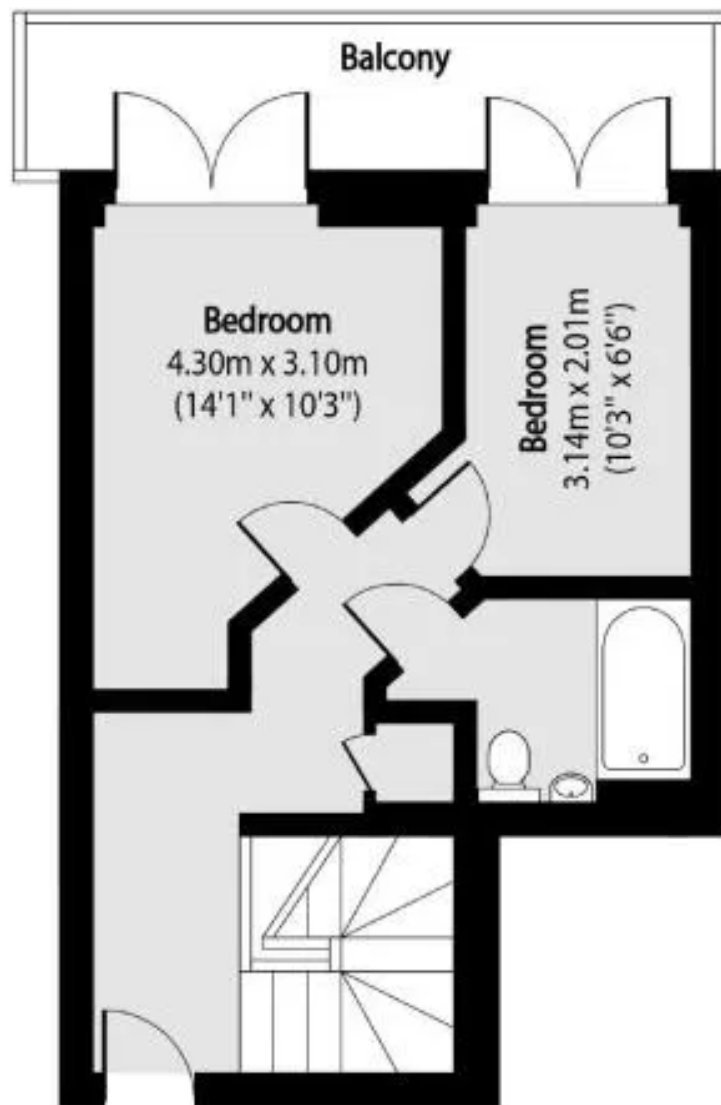
Location -This apartment is perfectly situated to take advantage of excellent transport links and local amenities: Just a short walk to Devons Road and Langdon Park DLR stations, and a 10-minute walk to Bromley-By-Bow (District and Hammersmith & City Lines).

Close to vibrant bars, a favourite is the Angel of Bow, a great local that does a delicious Sunday roast including vegan options and hosts open mic nights. There is a selection of restaurants, and cafes such as Saffi and Les Miches along with shopping at Canary Wharf, Westfield Stratford, Hackney Wick and the O2 Arena.

Green Spaces: Nearby parks and green spaces include Bartlett Park with a great café and bakery, Three Mills Park, Limehouse Canal, The Olympic Park and Victoria Park, offering plenty of opportunities for outdoor activities.



First Floor



Second Floor

Total area (approx): 70.77 sq m (762 sq. ft)

Balcony total area (approx): 15.86 sq m (171 sq. ft)

David Greenslade

Your Personal Estate Agent

02080 500 252 | david.greenslade@exp.uk.com | <https://davidgreenslade.exp.uk.com>