



**Maestro Apartments, Violet Road, E3**  
London

Offers Over  
**£350,000**





**Bedrooms: 2**

**Bathrooms: 2**

**Receptions: 1**

Please Quote Ref DG0640. Offered Chain Free. Welcome to this bright and spacious West facing duplex apartment in the pet friendly Maestro Apartments. With two double bedrooms and two private balconies.

Arranged over two floors, with the first floor offering a spacious open plan lounge with access to a balcony and the kitchen featuring integrated appliances. There is also a toilet on this floor for convenience. On the second floor you have two generously sized bedrooms, both with access to the second balcony along with a modern bathroom.

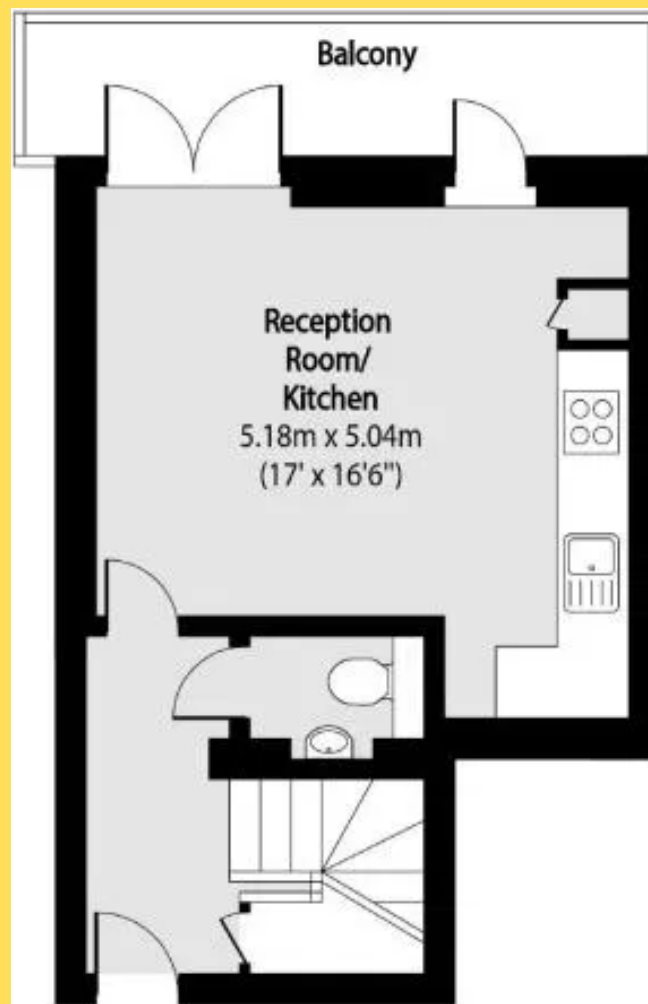
Enjoy the outdoors from your two private West facing balconies, with views towards Canary Wharf and perfect for your morning coffee. The apartment also benefits from access to a large communal roof terrace with stunning city views and secure bike storage.

The apartment also benefits from access to a large communal roof terrace with stunning city views, secure bike storage, and an on site gym (monthly membership fee applies).

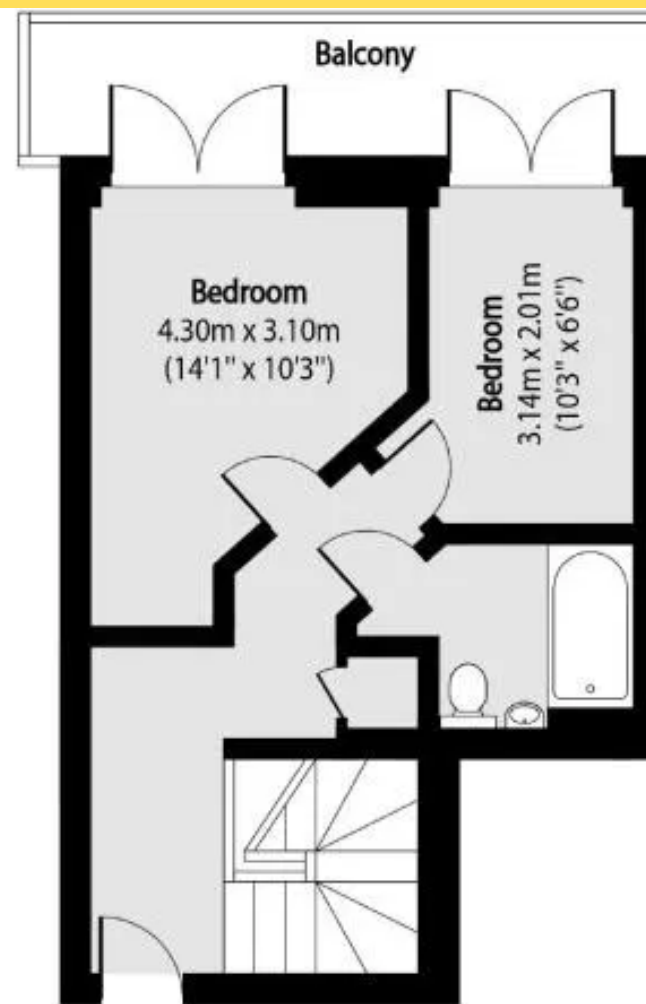








First Floor



Second Floor

Total area (approx): 70.77 sq m (762 sq. ft)

Balcony total area (approx): 15.86 sq m (171 sq. ft)

**David Greenslade**

**G05 Ceram Court 10 Seven Seas Gardens London E3 3GW**

**02080 500 252**

david.greenslade@exp.uk.com

<https://davidgreenslade.exp.uk.com>