



Maestro Apartments, Violet Road, E3

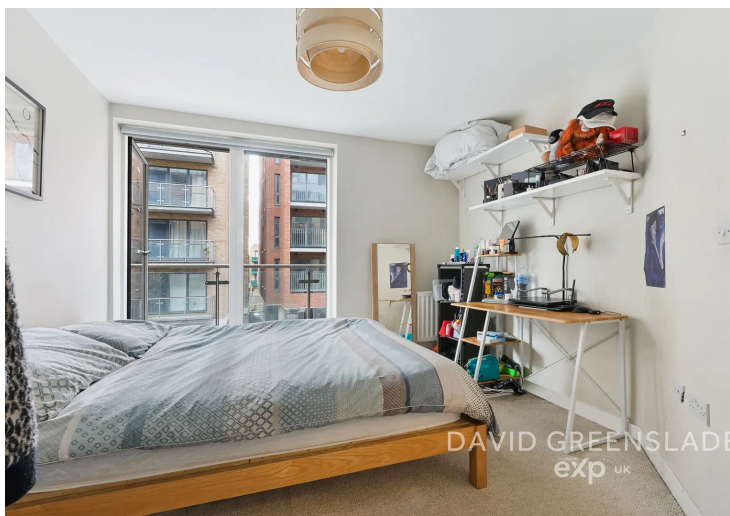
Offers Over £350,000

Offered Chain Free. Welcome to this bright and spacious West facing duplex apartment in the pet friendly Maestro Apartments. With two double bedrooms and two private balconies.

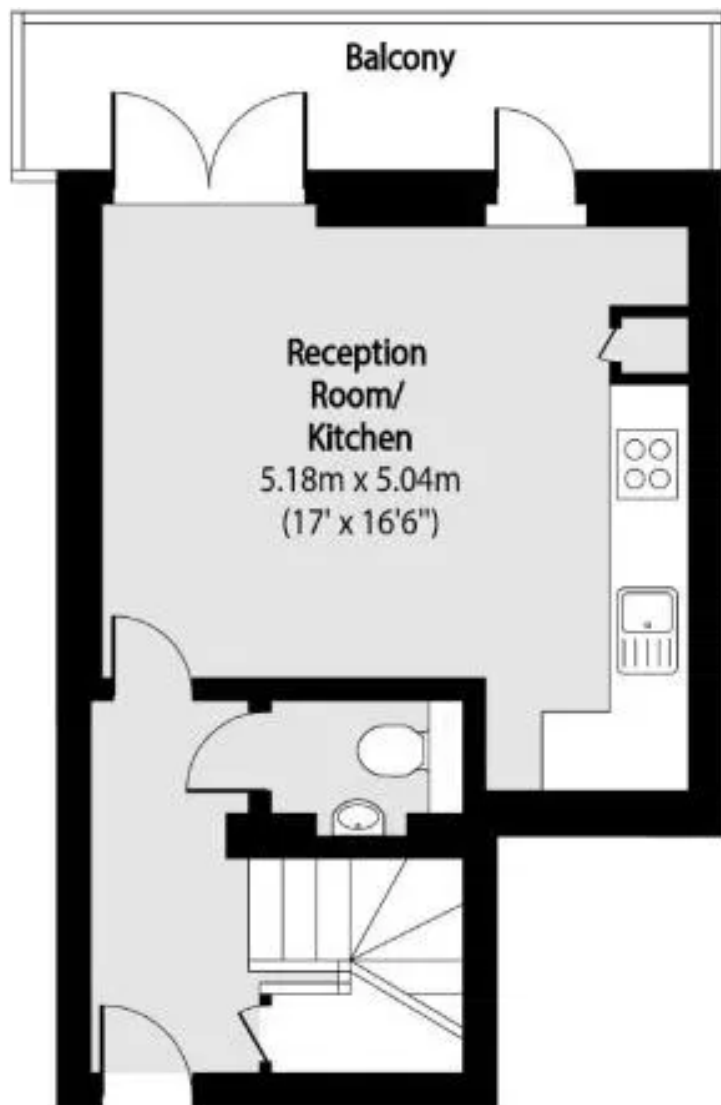
Arranged over two floors, with the first floor offering a spacious open plan lounge with access to a balcony and the kitchen featuring integrated appliances. There is also a toilet on this floor for convenience. On the second floor you have two generously sized bedrooms, both with access to the second balcony along with a modern bathroom.

Enjoy the outdoors from your two private West facing balconies, with views towards Canary Wharf and perfect for your morning coffee. The apartment also benefits from access to a large communal roof terrace with stunning city views and secure bike storage.

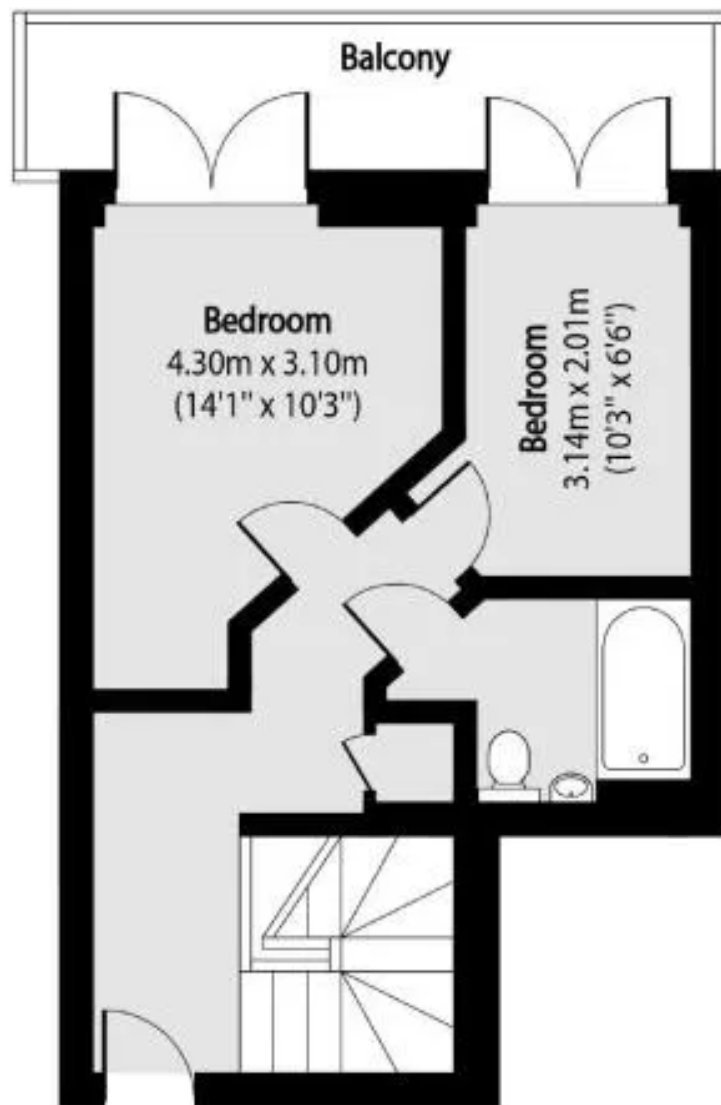
Bedrooms: 2 | Bathrooms: 2 | Receptions: 1







First Floor



Second Floor

Total area (approx): 70.77 sq m (762 sq. ft)

Balcony total area (approx): 15.86 sq m (171 sq. ft)

David Greenslade

Your Personal Estate Agent

02080 500 252 | david.greenslade@exp.uk.com | <https://davidgreenslade.exp.uk.com>