



DANIEL ARCHER

exp<sup>®</sup> UK

@ daniel.archer@exp.uk.com

🌐 danielarcher.exp.uk.com

☎ 07792 947 756



## Amity Grove, West Wimbledon, SW20

£1,200,000

🛏 4 🚿 2 🚗 1

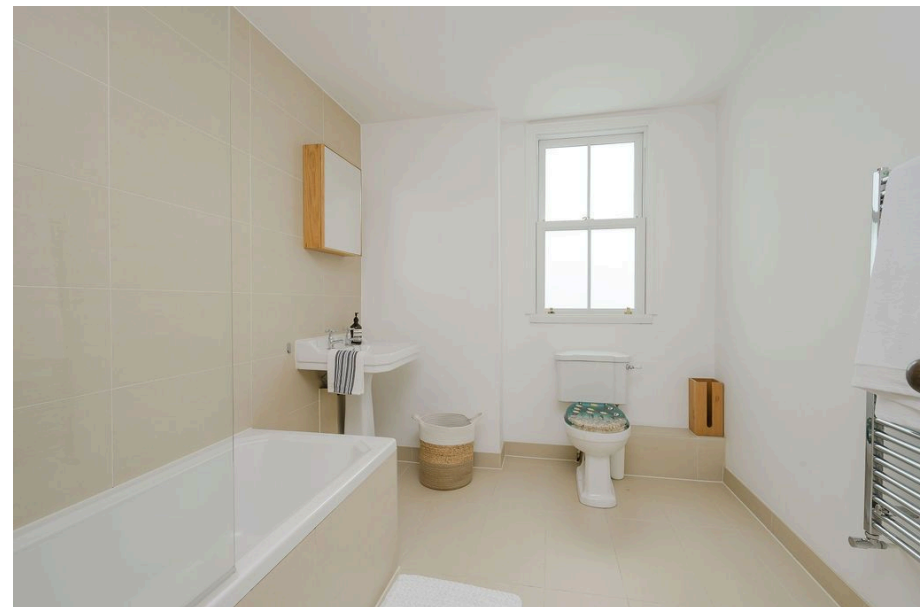
- Stunning Four Bedroom Victorian Terraced Family Home (1,567 Sq.Ft)
- Beautifully Refurbished, with Character Appeal
- Wonderful Extended Kitchen/ Diner with Separate Utility & Cloakroom
- Garage with rear access (or potential for convert to garden room)
- No Chain
- Quality Kitchen with Quartz Worktops and Underfloor Heating
- Double Length Reception Room
- Two Bath/Shower Rooms
- Private West Facing Garden
- Close to Raynes Park Station, Schools and Amenities



Gorgeous four bedroom two bath/shower room Victorian family home (1,567 Sq. Ft) with private garage, off road parking and delightful secluded West facing garden, with no onward chain, ideally situated just a short walk from Raynes Park station, schools and High Street amenities. The property has been beautifully refurbished and superbly appointed, offering bright and spacious accommodation laid out over three floors with enormous character appeal, sympathetically enhanced with stylish interiors and high quality finish. Property Ref: DA0587







eXp World UK Ltd is a registered company at Corporation Service Company (UK) Limited, 5 Churchill Place, 10th Floor, London, United Kingdom, E14 5HU. Registered company number is 12016573. VAT Registration Number is 327 4120 29