

Hastings Road, West Ealing, W13

Guide Price £435,000 to £450,000

2 1 1



- Quote MG1175 for all enquiries
- Newly Refurbished 2 Bed Flat
- Open-Plan Kitchen/Reception
- 2nd Floor
- Contemporary Kitchen
- Guide Price of £435,000 to £450,000
- 1 Bathroom
- 654 Sqft
- Superb design features
- Short Walk to West Ealing Station (Elizabeth Line)

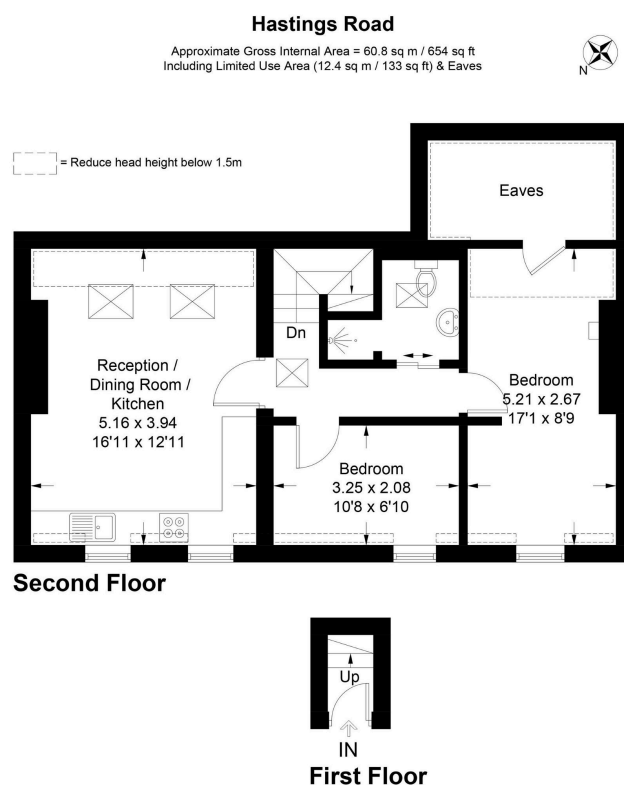


Illustration for identification purposes only, not for valuation purposes, measurements are approximate, not to scale. IPMS2

A bright and newly refurbished two-bedroom top floor flat with excellent storage and charming period features, set on a quiet residential street in W13. Occupying the top floor of an attractive converted property, this 654 sq ft flat offers a well-balanced layout with two bedrooms, a modern bathroom, and a spacious open-plan kitchen/reception room.