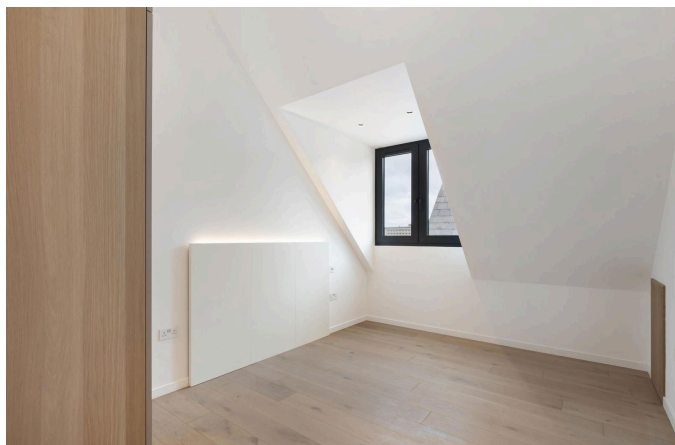
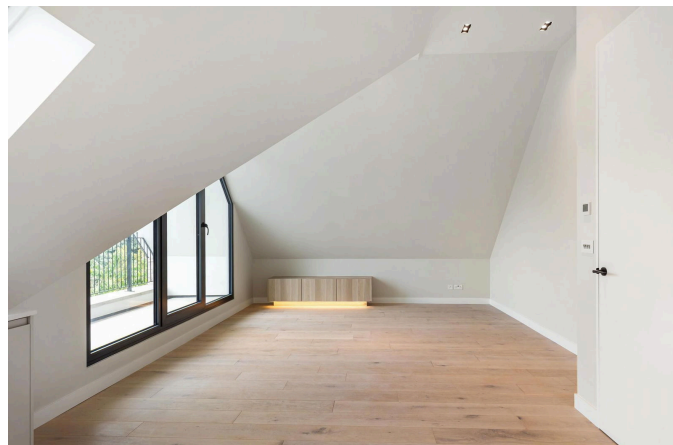
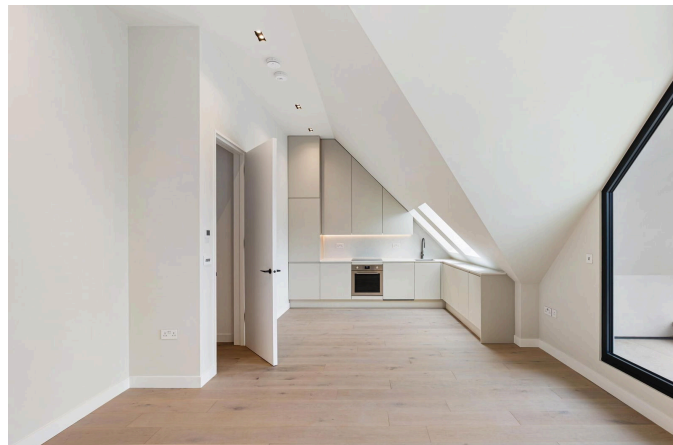


Creswick Road, London, W3

£3,250PCM (Deposit: £3,750)

2 2 1

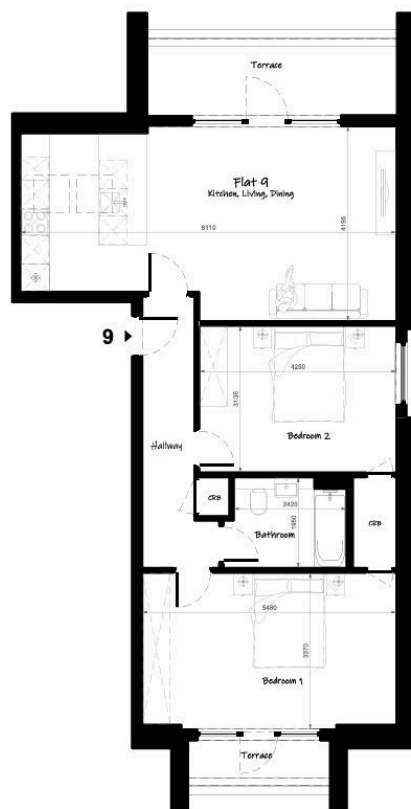


	Current	Potential
Very energy efficient - lower running costs		
(92 plus) A		
(81-91) B		
(69-80) C	80	80
(55-68) D		
(39-54) E		
(21-38) F		
(1-20) G		
Not energy efficient - higher running costs		

Tax Band: Furnished:
Unfurnished

- Please quote MG1175 for all enquiries.
- 1 Bathrooms
- Bespoke Kitchen with Integrated Smeg Appliances
- Underfloor Heating Throughout
- Luxury Finish Throughout
- 2 Bedroom
- 2 Private Balconies
- 858 sqft
- Excellent Transport Links: Elizabeth Line, Overground, Central & Piccadilly Lines
- Second Floor

FLAT 9 - (2 Bed Apartment)



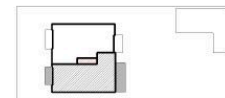
Dimensions	m ²	ft ²
Total Gross Internal area	79.7 Sq. m*	857.6 Sq. *

*Includes internal walls

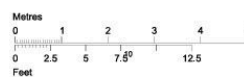
Terrace (Rear)	8.8 Sq. m	95.1 Sq. *
Terrace (Front)	3.0 Sq. m	31.8 Sq. *

Level location	Floor locator
----------------	---------------

- 2nd floor
- 1st floor
- Ground Floor
- Lower Ground



Second Floor Level



Quote MG1175 on all enquiries.

READY TO MOVE IN | 2 BEDROOM SECOND FLOOR APARTMENT | TWO PRIVATE BALCONIES | 858 SQ FT

