

## Creswick Road, London, W3

£3,500PCM (Deposit: £4,038)

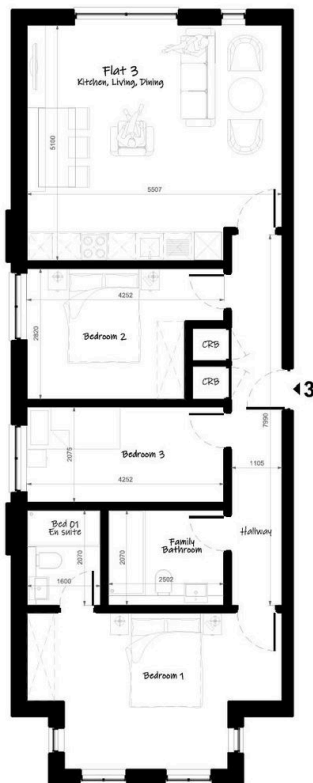
3 2 1



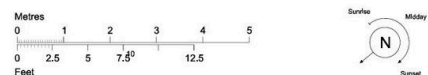
Tax Band: D  
Furnished:  
Unfurnished

- Please quote MG1175 for all enquiries.
- 2 Bathrooms (1 En-Suite)
- Bespoke Kitchen with Integrated Smeg Appliances
- Underfloor Heating Throughout
- Luxury Finish Throughout
- 3 Bedroom
- South-Facing Communal Garden
- 920 sqft
- Excellent Transport Links: Elizabeth Line, Overground, Central & Piccadilly Lines
- Ground Floor

FLAT 3 - (3 Bed Apartment)



Dimensions	m <sup>2</sup>	ft <sup>2</sup>
Total Gross Internal area	85.5 Sq. m*	920.2 Sq. ft
*Includes internal walls		



Quote MG1175 on all enquiries.

READY TO MOVE IN | 3 BEDROOM GROUND FLOOR APARTMENT | SOUTH-FACING COMMUNAL GARDEN | 920 SQ FT