



CHRISTOPHER WOOD POWERED BY exp TM UK

@ christopher.wood@exp.uk.com

christopherwood.exp.uk.com

01494 623 101

Crabbe Crescent, Chesham, HP5 3DD

Guide Price £500,000

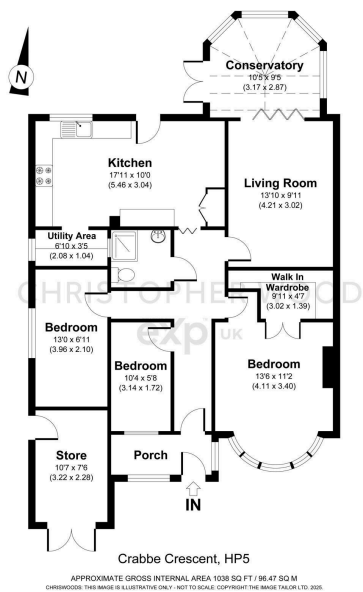
3 1 2



- 3 bedroom semi- detached bungalow
- Kitchen/dining room with utility
- Popular hilltop location
- Mature garden with patio area
- Beautiful conservatory with doors out to the patio
- 1 Bathroom
- Driveway parking
- Single garage for storage
- Walking distance to good schooling (inc Chesham Grammar school)
- Please quote CW0111



Offered to the market chain free, an extended and beautifully presented 3 bedroom semi-detached bungalow situated on the popular hilltop location, with driveway parking and close to well regarded schools...



11/06/2025, 10:45 Energy performance certificate (EPC) - Find an energy certificate - GOV.UK

Energy performance certificate (EPC)		
25 Crabbe Crescent CHESHAM HP5 3QD	Energy rating D	1965 unit, 8 June 2025 Certificate number: 1105-1289-0022-4003-3653
Property type		Semi-detached bungalow
Total floor area		76 square metres

Rules on letting this property

Properties can be let if they have an energy rating from A to E.

You can read [guidance for landlords on the regulations and exemptions](https://www.gov.uk/guidance/domestic-energy-rated-property) <https://www.gov.uk/guidance/domestic-energy-rated-property>

Energy rating and score

This property's energy rating is D. It has the potential to be C.

[See how to improve this property's energy efficiency](#)

The graph shows this property's current and potential energy rating.

Properties get a rating from A (best) to G (worst) and a score. The better the rating and score, the lower your energy bills are likely to be.

For properties in England and Wales:
the average energy rating is D
the average energy score is 60

Score	Energy rating	Current	Potential
92+	A		
81-91	B		
69-80	C		
55-68	D	48 D	60 C
35-54	E		
21-34	F		
1-20	G		