



LUKE TUBB

exp[®] UK

@luke.tubb@exp.uk.com

luketubb.exp.uk.com

07474 207 457

London, NW10 7AL

£1,750PCM (Deposit: £2,019)

 1  1  1



Tax Band: D Furnished: Flexible furnishings

*****PLEASE QUOTE LT0751 FOR ALL ENQUIRIES*****

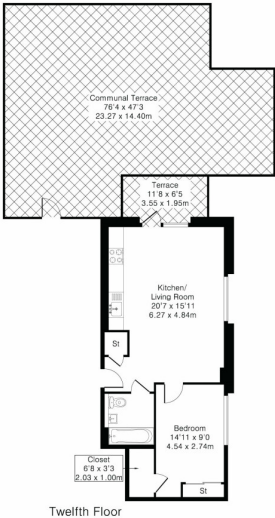
**To Let: 1-Bedroom Flat with Stunning North London Views,
Wembley Skyline and direct access to 100+sqm Roof Terrace**

Discover this exceptional 1-bedroom flat located on the 12th floor of a modern development, offering uninterrupted panoramic views across North London, including the iconic Wembley Stadium. With 541 sq ft of thoughtfully designed living space, this property is perfect for a couple or individuals with bright, ample space and direct access to stunning 100+sqm Roof Terrace.





Approximate Gross Internal Area 541 sq ft - 50 sq m



Score	Energy rating	Current	Potential
92+	A	82 B	82 B
81-91	B		
69-80	C		
55-68	D		
39-54	E		
21-38	F		
1-20	G		

The graph shows this property’s current and potential energy rating.