




## Walnut Tree Close, Guildford, GU1 4TT

Guide Price £485,000

 2  2  1



- Quote JD0696 & RA1223 For All Enquires
- Open-plan Reception & Dining Room
- Private Balcony & Communal Gardens
- Close to Guildford Station
- Two Bed Two Bathrooms
- Premium Finishes & Luxury Kitchen
- Principle Bedroom With En-Suite
- First Floor Lateral Apartment
- Close to Guildford Town Centre
- 756 Square Foot

**Trinity Quarter**

Approximate Area = 70.2 sq m / 756 sq ft

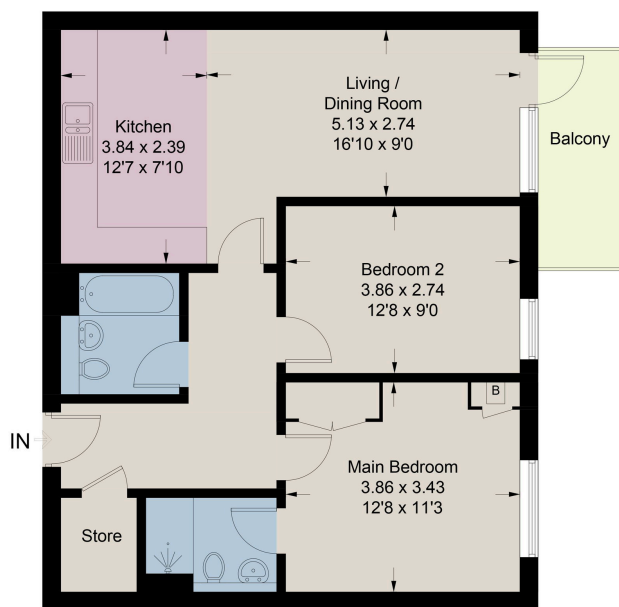
**First Floor**

Illustration for identification purposes only, not for valuation purposes, measurements are approximate, not to scale.

Quote JD0696 for all enquiries

This newly built, two-bedroom flat in Central Guildford offers an open-plan reception room with a private balcony. Completed in 2019, it's part of a development located on the banks of the River Wey, comprising a small collection of boutique apartments. The flat has 2 bedrooms, 2 bathrooms, and over 756 sqft of lateral living space. The fully integrated kitchen-diner has modern appliances and a contemporary finish. Abundant natural light pours in through large windows, creating a bright, airy atmosphere. The private balcony is south-facing.