

Allfarthing Lane, Wandsworth, SW18

£375,000 - £400,000

1 1 1



PLEASE QUOTE JW0326 - GUIDE PRICE £375,000 - £400,000 - Gorgeous one bedroom ground floor maisonette (442 Sq.Ft) with external terrace, ideally situated within easy reach of the centre of Wandsworth, unrivalled transport links and bustling amenities. Offered to the market with share of the freehold, the property offers bright and spacious accommodation with a wealth of period appeal, sympathetically appointed with stylish interiors and neutral decor throughout - ideal for first time or investor buyers alike. Features include an inviting open plan reception/kitchen, contemporary style bathroom, bedroom with well equipped dressing area, high ceilings, gas central heating, double glazing, quality floor coverings and private entrance.

Key Features

- PLEASE QUOTE JW0326
- STUNNING 1 BED GROUND FLOOR MAISONETTE (442 SQ.FT)
- FANTASTIC EARLSFIELD/WANDSWORTH LOCATION
- PERIOD APPEAL AND STYLISH INTERIORS
- HIGH CEILINGS
- MODERN OPEN PLAN LIVING
- EXTERNAL TERRACE
- SHARE OF FREEHOLD
- CLOSE TO EXCELLENT TRANSPORT LINKS
- EASY ACCESS SHOPS AND AMENITIES

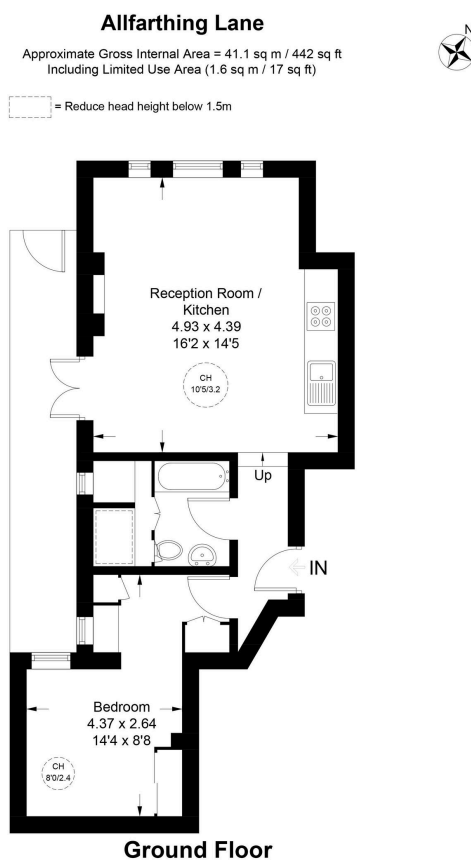


Illustration for identification purposes only, not for valuation purposes, measurements are approximate, not to scale. IPMS2