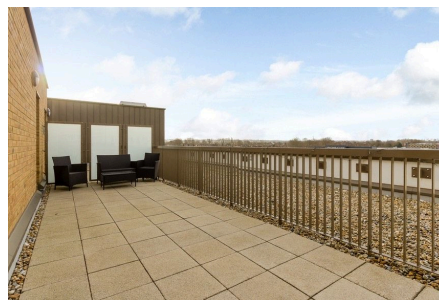


## Connersville Way, Croydon, CR0

£350,000

🛏 2 🚿 2 🛋 1



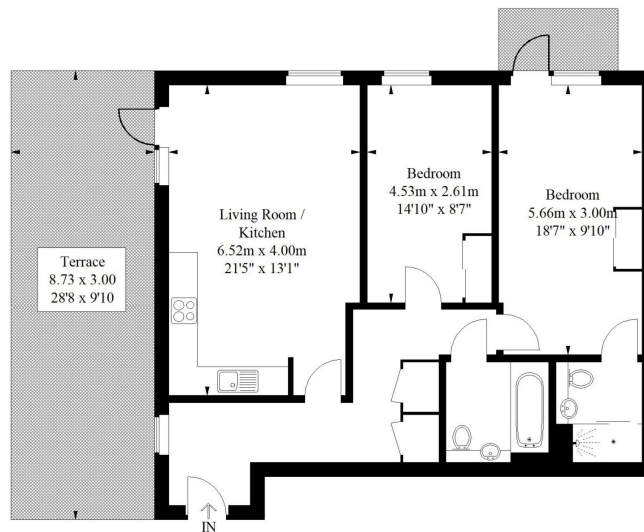
**QUOTE MR0560** - Beautifully presented two bedroom, two bathroom, third floor penthouse apartment (864 Sq.Ft) with large south facing private terrace and further balcony, superbly situated in a popular development moments from transport links and amenities. Offered to the market with long lease and no onward chain, the property provides light and spacious accommodation with modern interiors and neutral finish throughout - ideal for homeowner or investor alike. Features include a generous open plan reception/fitted kitchen, modern bathroom and principal en-suite, communal heating, double glazing, wood effect flooring. The development further benefits from a residents bike store, on-site cafe and climbing wall, and concierge services.

## Key Features

- QUOTE MR0560
- Well Presented Two Bedroom Penthouse Apartment (864 Sq.Ft)
- Popular Modern Development
- Stylish Interiors and Neutral Finish
- Bright and Spacious Open Plan Reception/Kitchen
- Large South Facing Private Terrace and Balcony
- Family Bathroom and Principal Bedroom with En-Suite
- Bike Store, On-Site Facilities and Concierge Services
- Long Lease and No Chain
- Moments from Transport Links, Shops and Amenities

### Tudor Court, Croydon

Approximate Gross Internal Area  
80.3 sq m / 864 sq ft



### Third Floor

Illustration for identification purposes only, measurements are approximate, not to scale.  
FloorplansUsketch.com © 2020 (ID709638)