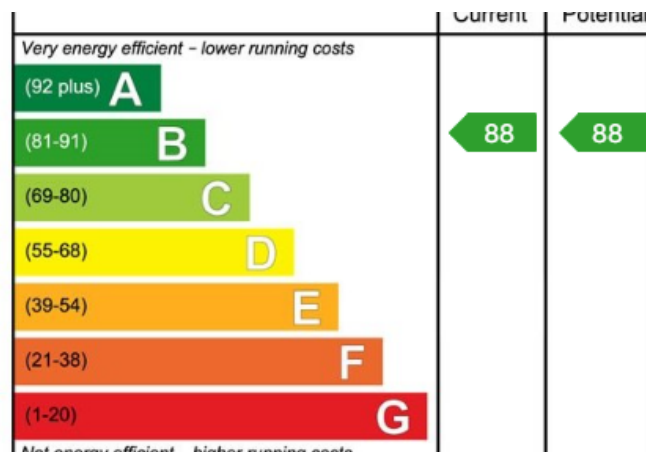


Nelson House, 1, Westwick Gardens

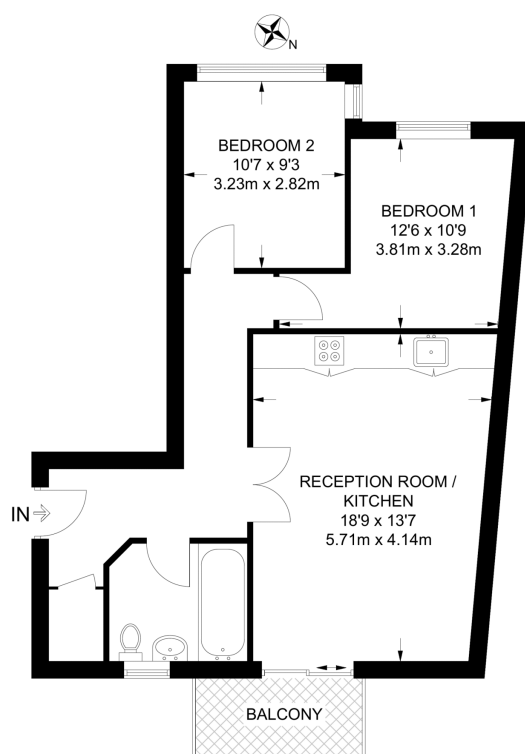
£2,500PCM (Deposit: £2,884)

2 1 1



Tax Band: D Furnished:
Not Specified

- Please quote MG1175 for all enquiries
- Open Plan Kitchen/Reception with floor to ceiling windows
- 2nd Floor
- c. 643 sqft
- Moments from green park & Walking distance to multiple transport lines
- 2 Double Bedrooms
- Private Balcony
- Contemporary Finish Throughout
- Pet Friendly
- Close to shops & restaurants of Westfield Shopping Centre



SECOND FLOOR

APPROXIMATE GROSS INTERNAL AREA
643 SQ FT / 59.7 SQ M

This plan has been drawn for illustrative and identification purposes only.

Please quote MG1175 for all enquiries.

Situated in the vibrant heart of Shepherd's Bush, this well-presented two-bedroom, one-bathroom flat on the second floor offers a stylish and comfortable living space ideal for modern urban living. Benefiting from an east-facing aspect, the property enjoys an abundance of natural morning light throughout the spacious open-plan kitchen and reception area.