

## The Pigeon House, Redbourn Road

Guide Price £850,000

4 3 3



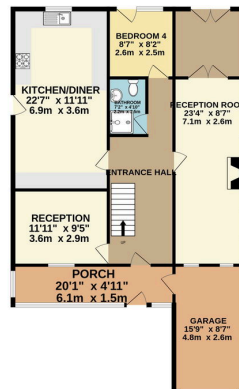
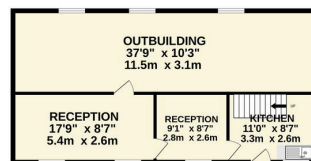
Ref: MS0129

Occupying a prime position on Redbourn Road, between Cupid Green Roundabout and Cherry Tree Lane, this impressive detached chalet bungalow offers versatile three/four-bedroom accommodation finished to an exemplary standard throughout. The property features spacious and flexible living accommodation with three/four well-proportioned bedrooms, all maintained in immaculate decorative condition. An integral garage provides secure parking, and the entire property is presented in move-in condition requiring no additional work.

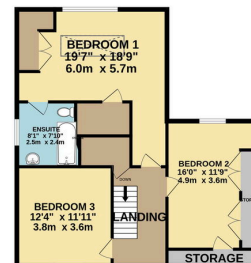
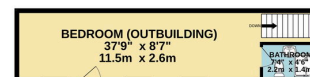
The property's standout feature is the substantial double-storey outbuilding located at the rear of the garden. At over 1000 SQ FT (93 SQM), this remarkable structure essentially offers the footprint of a separate dwelling, accessible via its own dedicated driveway from the slip road behind the property. Subject to planning permission.

- 4 Bedrooms
- Conservatory
- Integral Garage
- Almost 3,000 SQ FT (277.9 SQM) Living Space Including Outbuilding
- Development Opportunity of Outbuilding
- 3 Reception Rooms
- 3 Bathrooms
- Off Street Parking for Several Cars
- Chain Free
- Well Located for Good Schools and Road Links

GROUND FLOOR  
1857 sq.ft. (172.5 sq.m.) approx.



1ST FLOOR  
1135 sq.ft. (105.4 sq.m.) approx.



TOTAL FLOOR AREA: 2991 sq.ft. (277.9 sq.m.) approx.

Whilst every attempt has been made to ensure the accuracy of the floorplan contained here, measurements of doors, windows, rooms and any other items are approximate and no responsibility is taken for any error, omission or mis-statement. This plan is for illustrative purposes only and should be used as such by any prospective purchaser. The services, systems and appliances shown have not been tested and no guarantee as to their operability or efficiency can be given.

Made with Metropix ©2025